

Front Windshield Assembly Instructions



Treker, 4220ST & 4420ST Series

Manual No. 701-173M

Before You Start



When you see this symbol, the subsequent instructions and warnings are serious - follow without exception. Your life and the lives of others depend on it!

IMPORTANT: Before you begin, read these instructions and check to be sure all parts and tools are accounted for. Please retain these installation instructions for future reference and parts ordering information.

Your Front Windshield is exclusively designed for your Land Pride 4220ST & 4420ST Treker. Please read these installation instructions and your vehicle's Operator Manual thoroughly before beginning. Especially read information relating to safety concerns.

A separate Parts Manual for replacement parts can be purchased from your dealer or available free of charge at www.landpride.com. Have model and serial numbers handy when placing an order.

Manual Part Numbers:

- Operator's Manual 700-504M
- Parts Manual 700-504P

General Information

These assembly instructions apply to the Front Windshield accessory listed below:

701-172A Front Windshield, Series 20 Treker

A detailed listing of parts for the accessory kit is provided below. Use this list as a checklist to inventory parts received. Please contact your local Land Pride dealer for any missing hardware.

Kit No. 701-172A

Front Windshield, Series 20 Treker

Qty.	Part No.	Part Description
1	701-173M	Front Windshield Assembly Instructions
1		Hinged Windshield
1	80401150	Hardware bag consisting of: 6 - Rubber Coated Clamps (Black) 4 - 6mm Phillips Head Screws (Black) 4 - 6mm Nylock Flanged Nuts (Black) 2 - Fender Washers (Black) 2 - Flat Washers (Black) 2 - Ball Studs with 5/16" studs 2 - 5/16" Nylock Flanged Nuts

Further Assistance

Your dealer wants you to be satisfied with your new Front Windshield. If for any reason you do not understand any part of this manual or are not satisfied with the service received, the following actions are suggested:

1. Discuss the matter with your dealership service manager making sure he is aware of any problems you may have and that he has had the opportunity to assist you.
2. If you are still not satisfied, seek out the owner or general manager of the dealership, explain the problem and request assistance.
3. For further assistance write to:

Land Pride Service Department
1525 East North Street
P.O. Box 5060
Salina, Ks. 67402-5060

E-mail address
lp servicedept@landpride.com

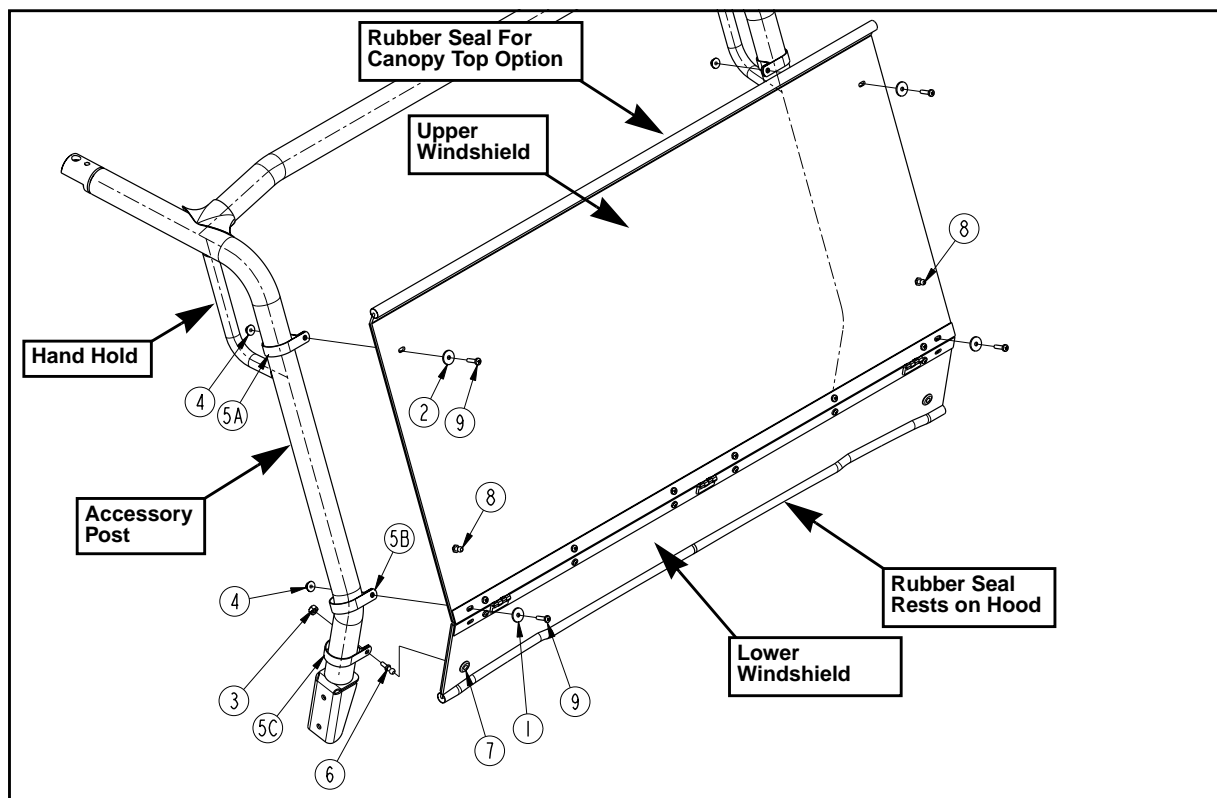
Assembly Instructions

Installation is easier with two people and with the vehicle clean and free of debris. Approximate installation time is 30 Minutes.

Tools required:

- Safety Glasses
- Work Gloves
- 10mm Box end or open end wrench
- 1/2" Box end or open end wrench
- Phillips Screwdriver

Assembly Instructions



4220ST & 4420St Treker Front Windshield Installation

Figure 1

Refer to Figure 1:

1. Park vehicle on a flat surface, move gear shift lever to park, turn off engine and remove ignition key.
2. Install one washer per screw onto the four 6mm phillips head screws (#9). Two screws will have fender washers (#2) and two will have flat washers (#1).
3. Select two rubber coated clamps (#5A). With the straight leg of each clamp facing forward, slip clamps over the left and right front accessory posts just inside the upper hand hold loops.
4. Position windshield in front of the accessory posts with ball studs (#8) in the upper windshield facing forward. Allow the rubber seal at the bottom to rest on the hood.
5. Center windshield on the front accessory posts and insert 6mm screws (#9) with fender washers (#2) through the upper windshield holes and rubber coated clamps (#5A). Secure screws loosely with nylock flange nuts (#4). Do not tighten screws.
6. Ensure the hinge does not bind by adjusting the windshield vertically until both the upper and lower windshields make full contact along the full length of the accessory posts. This will position the hinge on the bend line allowing the hinge to operate freely.
7. With the windshield centered and the hinge operating freely, tighten the upper 6mm nylock flange nuts (#4) to 5 ft-lbs. of torque. Be careful not to over tighten causing cracks in the windshield.
8. Select two more rubber coated clamps (#5B). With the straight leg of each clamp facing forward, slip the clamps over the left and right front accessory posts just above the lower bend.
9. Insert 6mm phillips head screws (#9) with small flat washers (#1) through the holes in the upper hinge bar and rubber coated clamps (#5B). Secure screws with nylock flange nuts (#4) and torque to 5 ft-lbs.
10. From inside the vehicle, insert the spherical end of the ball studs (#6) into the two rubber grommets (#7) located in the lower windshield.
11. Select remaining two rubber coated clamps (#5C). With the straight leg of each clamp facing forward, slip the clamps over the left and right front accessory posts close to the bottom.
12. Insert threaded portion of ball studs (#6) into the rubber coated clamps (#5C) and secure with 5/16" nylock flanged nuts (#3). Torque nuts to 13 ft-lbs.

Windshield Operation

1. Open lower windshield by carefully pulling on the windshield around each rubber grommet until windshield is free.
2. Hinge windshield up and press at each rubber grommet until the grommets have snapped onto the upper ball studs.
3. Close windshield by pulling around each rubber grommet until windshield is free. Hinge windshield down and press at each rubber grommet until the grommets have snapped onto the lower ball studs.