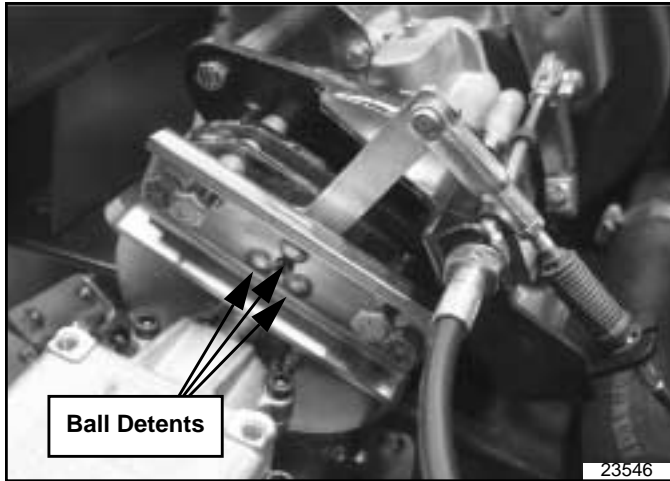


Park Brake Service Kit Assembly Instructions



Treker 4210ST & 4410 ST Series (S/N 490317-)

Manual No. 700-448M



Before You Start



When you see this symbol, the subsequent instructions and warnings are serious - follow without exception. Your life and the lives of others depend on it!

IMPORTANT: Before you begin, read these instructions and check to be sure all parts and tools are accounted for. Please retain these installation instructions for future reference and parts ordering information.

Your Park Brake Service Kit is exclusively designed for your Land Pride 10 Series Treker with S/N 490317 and below. Please read these installation instructions and your 10 Series Treker Operator's Manual thoroughly before beginning. Especially read information relating to safety concerns. Also included in the Operator's Manual is important information on operation, adjustment, troubleshooting, and maintenance for this attachment (some manual sections do not apply to all accessories).

A separate Parts Manual for replacement parts can be purchased from your dealer or available free of charge at www.landpride.com. Have model and serial numbers handy when placing an order.

Manual Part Numbers:

- Operator's Manual 700-108M
- Parts Manual 700-109P

General Information

These assembly instructions apply to the following Park Brake Service Kit listed below:

700-447A PARK BRAKE SERVICE KIT

Tools required:

- Safety glasses
- Work gloves
- 3/8" box end or open end wrench
- 7/16" box end or open end wrench
- 1/2" box end or open end wrenches (two required)
- 9/16" box end or open end wrench
- 11/16" box end or open end wrench

Further Assistance

Your dealer wants you to be satisfied with your new Park Brake Service Kit. If for any reason you do not understand any part of this manual or are not satisfied with the service received, the following actions are suggested:

1. Discuss the matter with your dealership service manager making sure he is aware of any problems you may have and that he has had the opportunity to assist you.
2. If you are still not satisfied, seek out the owner or general manager of the dealership, explain the problem and request assistance.
3. For further assistance write to:

Land Pride Service Department
1525 East North Street
P.O. Box 5060
Salina, Ks. 67402-5060

E-mail address
lp servicedept@landpride.com

Assembly Instructions

A detailed listing of parts for this accessory kit is provided on page 4. Use the list as a checklist to inventory parts received. Please contact your local Land Pride dealer for any missing hardware.

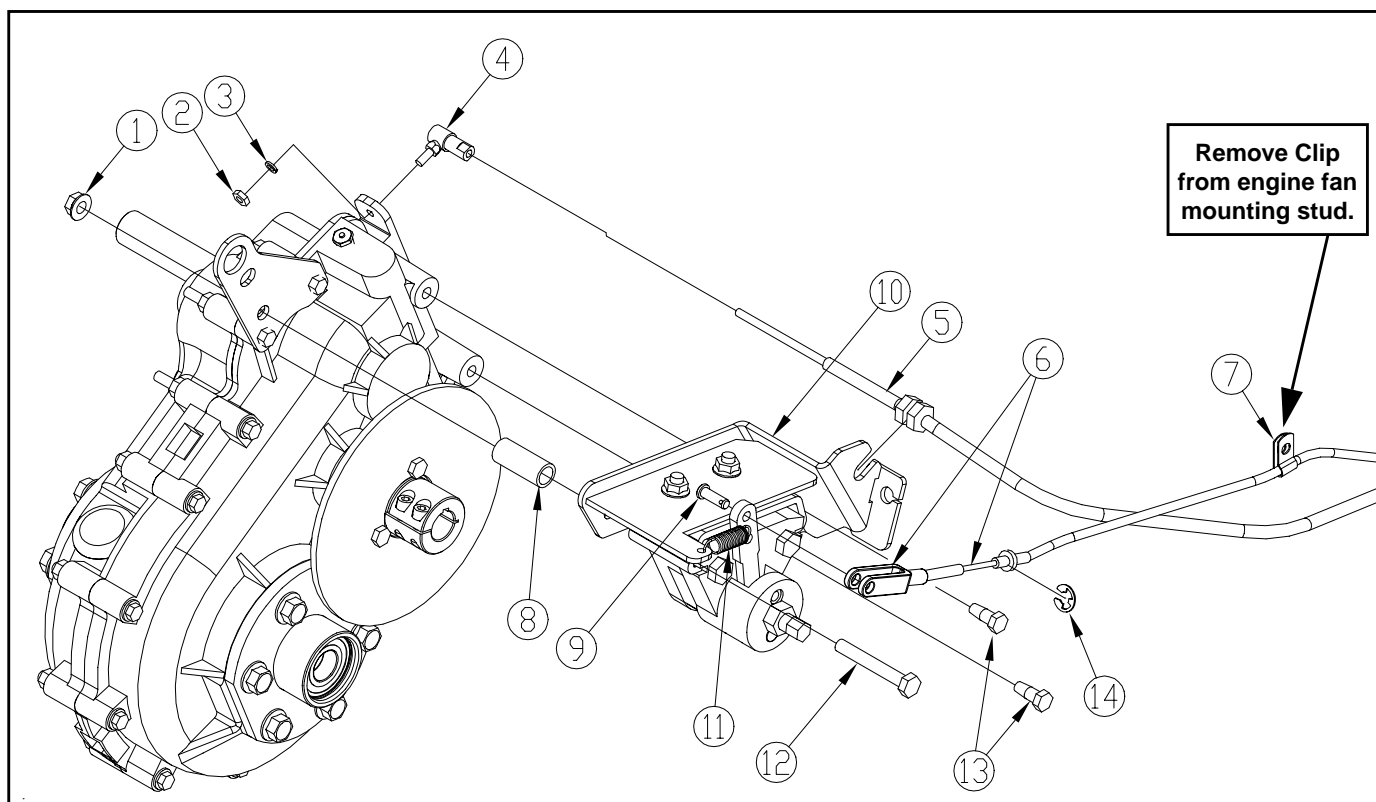
Secure Vehicle Before Servicing

IMPORTANT: Make certain the wheels are chocked and the cargo box is securely supported in the up position before working on the park brake and shift selector cable.

The steps listed below must be followed before installing this kit:

1. Park vehicle on a flat level surface with shift selector set in park. **Don't work under or around a vehicle parked on an incline.**
2. Chock front and back of rear wheels.
3. Secure cargo box in the up position.

Assembly Instructions



Removal of Existing Park Brake
Figure 1

4. Move shift selector to neutral, turn ignition switch off and remove switch key.

Removal of Existing Park Brake

Refer to Figure 1:

NOTE: Items 1 to 14 should be disassembled from the transmission when completed. Be sure to keep items 5, 6, 7, 9 & 14 for reassembly of new caliper park brakes.

1. With shift selector in neutral, remove extension spring (#11) from clevis pin (#9). Keep clevis pin for reuse.
2. Remove E retaining ring (#14) and park brake cable (#6) from caliper mounting bracket (#10). Keep cable and E retaining ring for reuse.
3. Remove 1/4" OD wiring/tube clip (#7) from engine fan mount. Keep clip, lock washer and hex nut for reuse during installation of new park brake kit.
4. Remove shift cable (#5) from caliper mounting bracket (#10).
5. Remove caliper mounting bracket (#10) by unscrewing 5/16" hex head cap screws (#12 & #13).
6. Remove hex nut (#2) and lock washer (#3).
7. Remove ball joint (#4) from shift cable (#5).

Installation of New Park Brake

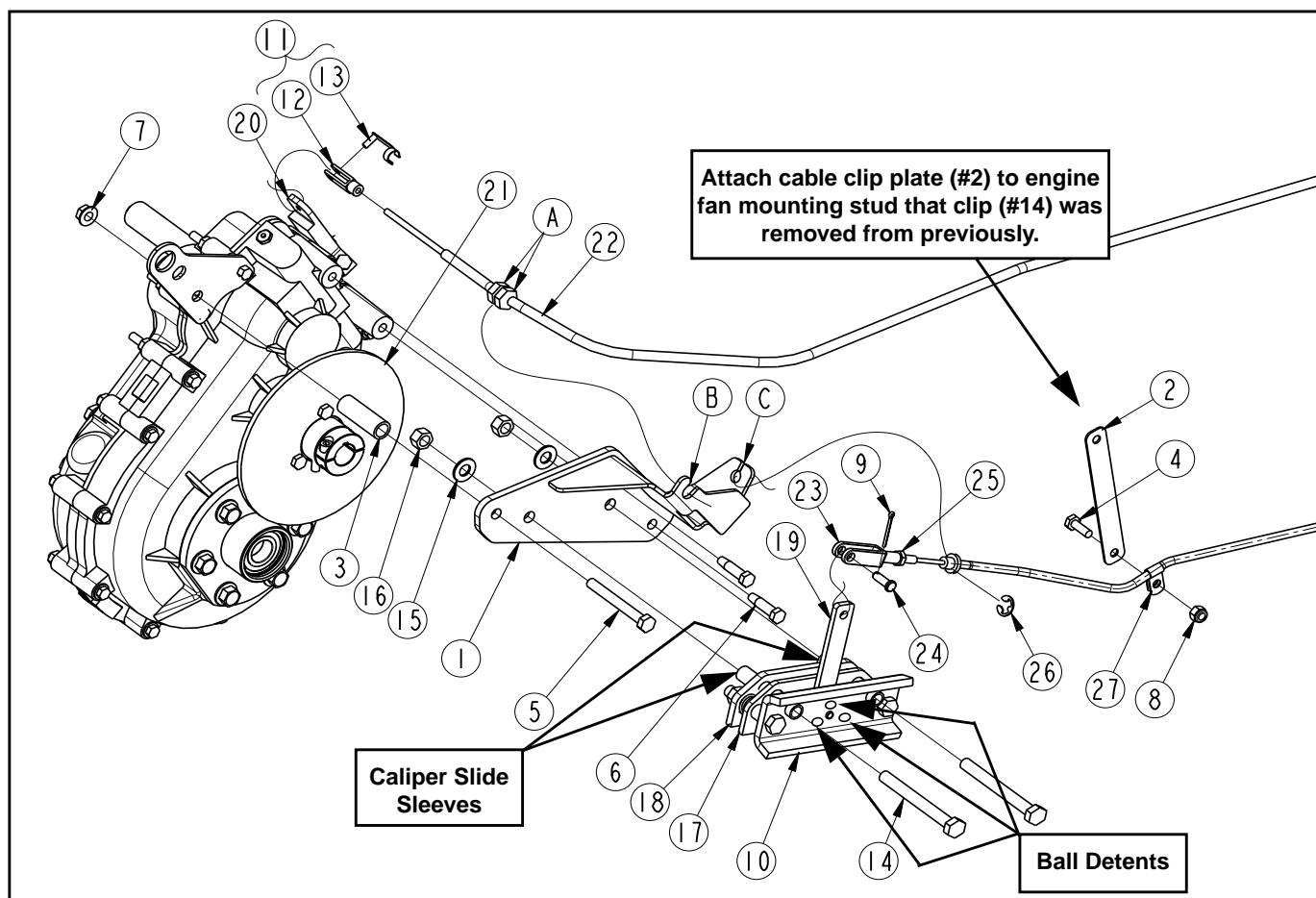
Refer to Figure 2 on page 3:

1. Attach brake caliper (#10) to caliper mounting bracket (#1) with 3/8"-16 x 3 1/2" GR8 hex head cap screws (#14), 3/8" flat washers (#15) and 3/8" hex top lock nut (#16). Tighten nuts to 31 ft-lbs.
2. Ensure calipers slides freely on sleeves. Loosen lock nuts (#16) if needed.
3. Position stator assemblies (#17 & #18) over brake disc (#21).
4. Attach caliper mounting bracket (#1) to transmission with one 5/16"-18 x 2 3/4" GR5 hex head cap screw (#5), caliper spacer tube (#3), 5/16" hex lock nut (#7) and two 5/16"-18 x 1 1/4" hex washer head cap screws (#6). Tighten cap screw (#5) to 17 ft-lbs. and cap screws (#6) to 11 ft-lbs.

IMPORTANT: Shift lever (#20) and dash mounted shift selector must both remain in neutral position while attaching yoke (#11) and shift cable (#22) to their respective mounting points.

5. Position adjusting nuts "A" so that the space between the two nuts is centered over mounting slot "B". Screw 1/4"-18 Yoke (#12) onto shift cable (#22) until its linch pin hole is in alignment with the linch pin hole in shift lever (#20).
6. With shift lever (#20) and dash mounted shift selector in neutral, attach yoke (#12) to shift lever (#20) with yoke linch pin (#13).

Assembly Instructions



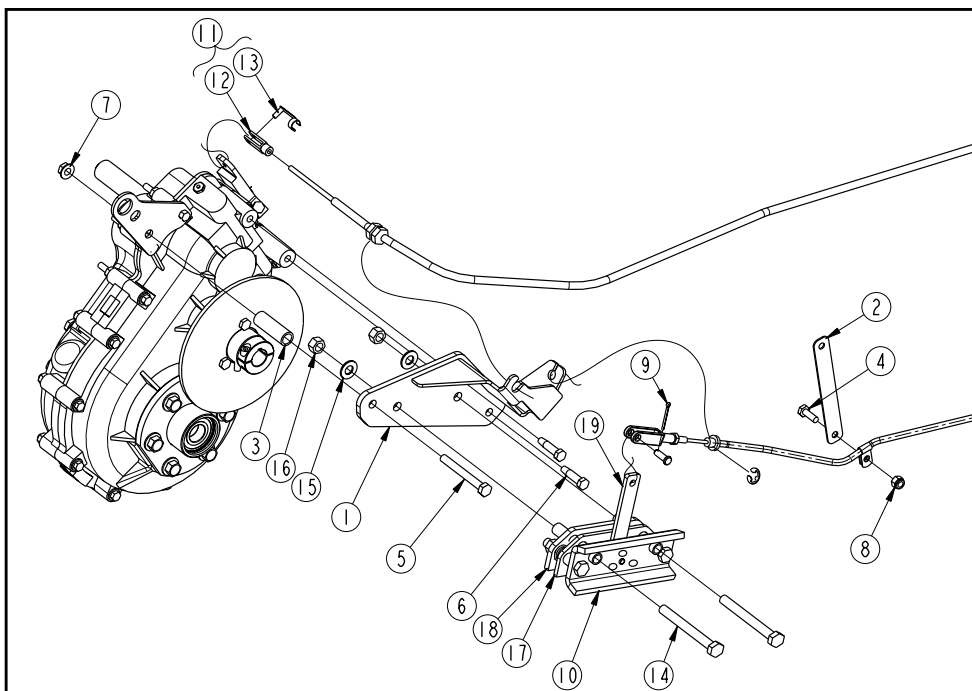
Installation of New Park Brake
Figure 2

7. Insert shift cable (#22) into open slot "B" and tighten nuts "A" against both sides of mounting bracket (#1). Shift lever and shift selector must remain in neutral while tightening adjusting nuts "A".
8. Insert park brake cable (#23) into slotted hole "C" and secure with existing E retaining ring (#26).
14. Attach brake cable clip plate (#2) to park brake cable (#23) with existing wiring/tube clip (#27), 1/4"-20 x 3/4" GR5 hex head cap screw (#4) and 1/4" hex nylock nut (#8). Tighten nut to 6 ft-lbs.

IMPORTANT: If the park brake lever is not properly adjusted, the stator assemblies (#17 & #18) can drag resulting in excessive brake wear and decreased engine power. When adjusted properly, the park brake lever (#19) will be located in its ball detent position with the dash mounted gear shift selector in neutral.

9. Allow park brake lever (#19) to seat itself in the ball detents.
 10. Loosen jam nut (#25) and adjust yoke (#23) in or out until the linch pin holes are in alignment with the park brake lever linch pin hole.
 11. Insert existing linch pin (#24) and secure with new cotter pin (#9). Bend one leg of cotter pin out.
 12. Tighten jam nut (#25) against yoke (#23).
 13. Attach brake cable clip plate (#2) to engine fan mounting stud. Secure with existing engine fan lock washer and nut. Tighten nut to correct torque.
2. Check park brake's ability to hold and release:
 - a. Move shift selector to park. Check stator assemblies (#17 & #18) to make sure they are seated tight against brake disc (#21). The vehicle should not move with shift selector in this position.
 - b. Return shift selector to neutral. Check stator assemblies (#17 & #18) to make sure they are not contacting brake disc (#21).
 3. Have your nearest Land Pride service center inspect installation before using the vehicle if either one of the checks above do not work properly.

Assembly Instructions



Kit No. 700-447A

PARK BRAKE UPDATE SERVICE KIT

Item	Part No.	Part Description	Qty
	700-448M	MANUAL, PARK BRAKE	1
1	700-423H	CALIPER MOUNT BRACKET	1
2	700-524D	BRAKE CABLE CLIP PLATE	1
3	700-525D	CALIPER SPACER TUBE	1
4	802-004C	HHCS 1/4-20X3/4 GR5	1
5	802-197C	HHCS 5/16-18X2 3/4 GR5	1
6	802-809C	HWH 5/16-18X1 1/4 THREAD-ROLL	2
7	803-177C	NUT HEX FLG TP LK 5/16-18ZNYCR	1
8	803-255C	NUT HEX NYLOCK 1/4-20	1
9	805-063C	PIN COTTER 3/32 X 1 LONG	1
10	840-312C	BRAKE CALIPER (Includes items 14 & 19 below)	1
11	890-884C	YOKE 10-32 W/ LOCK (Includes items 12 to 13 below)	1
12	N/A	1/4"-28 NF YOKE	1
13	N/A	YOKE LINCH PIN	1
14	802-781C	HHCS 3/8-16X3 1/2 GR8 PLT	2
15	804-012C	WASHER FLAT 3/8 SAE PLT	2
16	803-123C	NUT HEX TOP LOCK 3/8-16 PLT	2
17	82775	STATOR ASSEMBLY	1
18	82960	STATOR ASSEMBLY	1
19	82779	LEVER	1



Corporate Office: P.O. Box 5060
 Salina, Kansas 67402-5060 USA
 www.landpride.com