

Floating Top Link Assembly Instructions



Cat. I & Cat. II Quick Hitches

Manual No. 320-014M

Before You Start



When you see this symbol, the subsequent instructions and warnings are serious - follow without exception. Your life and the lives of others depend on it!

IMPORTANT: Before you begin, read these instructions and check to be sure all parts and tools are accounted for. Please retain these installation instructions for future reference and parts ordering information.

Your Floating Top Link is exclusively designed for your Land Pride Quick Hitch. Please read these installation instructions and your Quick Hitch Operator's Manual thoroughly before beginning. Especially read information relating to safety concerns. Also included in the Operator's Manual is important information on operation, adjustment, troubleshooting, and maintenance for this attachment (some manual sections do not apply to all accessories).

A separate Parts Manual for replacement parts can be purchased from your dealer or available free of charge at www.landpride.com. Have model and serial numbers handy when placing an order.

Manual Part Numbers:

- Operator's Manual 320-003M
- Parts Manual 320-003P

General Information

These assembly instructions apply to the following Floating Top Link Accessories listed below:

- 320-013A** **QH15 Floating Top Link Assembly**
- 320-028A** **QH20 Floating Top Link Assembly**



DANGER!

Engage parking brake, shut tractor engine off and remove switch key before performing installation of the Floating Top Link.

The Floating Top Link Kits are designed to adapt the Category I & II Quick-Hitches to implements that need to float about the upper hitch and lower hitch points during operation. Implements with gauge wheel(s) usually require a Floating Top Link. These kits are designed to adapt to the following Land Pride products:

Category II Floating Top Link

- Rotary Cutters:
Series RCR1884, RCR2596, RCR2510, RCRM2510 & RCR26

Category I Floating Top Link

- Flat Deck Grooming Mowers:
Series FD15, FDR15, FDR1660, FDR1672, FD25, FDR25 and FDR3590 after S/N 294658
- Air Tunnel Grooming Mowers:
Series AT25, AT26 & AT35
- Rotary Cutters:
Series RC15, RCR15, RCR16, RCR18, RCR2560, RCR2596, RCR2572, RCR2660 & RCR2672
- Power Rake:
Series PR16, PR25
- Seeders:
Series OS15 w/front roller, PS15 & APS15

Further Assistance

Your dealer wants you to be satisfied with your new Floating Top Link. If for any reason you do not understand any part of this manual or are not satisfied with the service received, the following actions are suggested:

1. Discuss the matter with your dealership service manager making sure he is aware of any problems you may have and that he has had the opportunity to assist you.
2. If you are still not satisfied, seek out the owner or general manager of the dealership, explain the problem and request assistance.
3. For further assistance write to:

Land Pride Service Department
1525 East North Street
P.O. Box 5060
Salina, Ks. 67402-5060

E-mail address
lp servicedept@landpride.com

QH15 Floating Top Link Installation

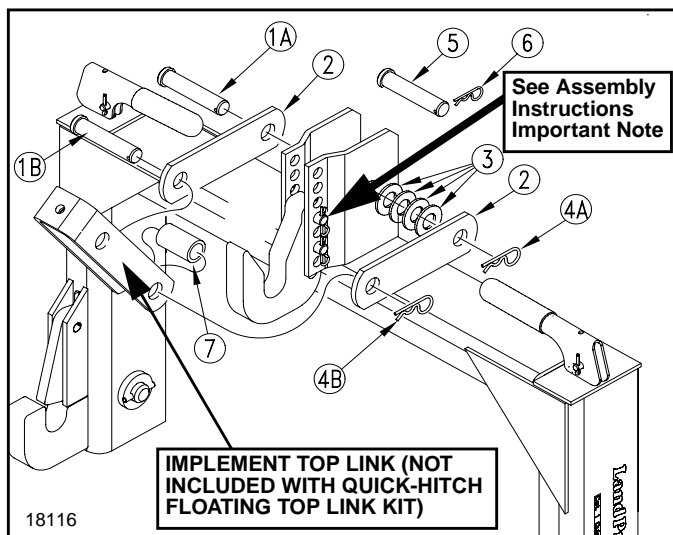
Refer to Figure 1:

Below is a detailed listing of parts included in this kit to serve as a checklist to inventory parts received. Please contact your local Land Pride dealer for any missing hardware.

QH15 Floating Top link Components		
Qty	Part No.	Part Description
320-013A QH15 Floating Top Link Assembly Kit		
1	701-014M	ASSEMBLY INSTRUCTIONS
2	805-228C	PIN CLEVIS 3/4 X 3 3/4 PLT
2	320-034D	QH FLOATING TOP LINK BAR
4	804-024C	WASHER FLAT 3/4 USS PLT
2	805-143C	PIN HAIR COTTER .120 PLT
1	320-035D	FLT TOP SPCER 1.12 O.D. x .81 I.D. x1 15/16"

IMPORTANT: If the Floating Top Link is being assembled on units with Serial Numbers 269719 and below then the bolts, nuts and lock washers (indicated with the arrow) should be replaced with bolt 802-128C and locknut 803-019C. This is due to the existing bolts being too long.

1. Remove existing 3/4" x 3 1/2" clevis pin (#5) and hair pin cotter (#6).
2. Install floating link bars (#2) with new 3/4" x 3 3/4" clevis pin (#1A) and hair pin cotter (#4A) making sure the four washer (#3) goes to the same side as the nuts (noted with larger arrow) in Figure 1.
3. Assemble spacer (#7) in implement's top link and place implement's top link between links (#2) as shown. Secure with clevis pin (#1B) and hair pin cotter (#4B).



QH15 Floating Top Link Installation
Figure 1

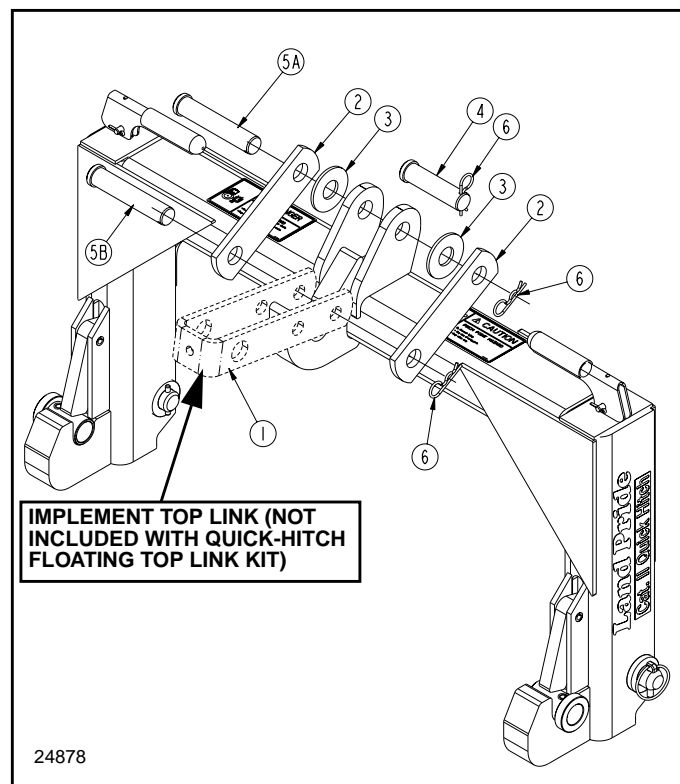
QH20 Floating Top Link Installation

Refer to Figure 2:

Below is a detailed listing of parts included in this kit to serve as a checklist to inventory parts received. Please contact your local Land Pride dealer for any missing hardware.

QH20 Floating Top link Components		
Qty	Part No.	Part Description
320-028A QH20 Floating Top Link Assembly Kit		
1	701-014M	ASSEMBLY INSTRUCTIONS
2	320-067D	QH FLOATING TOP LINK CAT II
2	804-028C	WASHER FLAT 1 USS PLT
2	805-131C	PIN CLEVIS 1 X 4 11/16 USABLE
2	805-032C	PIN HAIR COTTER .148 WIRE

1. Remove existing 1" x 3 1/2" clevis pin (#4) and hair pin cotter (#6).
2. Install floating link bars (#2) and flat washers (#3) with 1" x 4 1/2" clevis pin (#5A) and hair pin cotter (#6) as shown.
3. Assemble implement's top link (#1) between floating link bars (#2) as shown. Insert clevis pin (#5B) and secure with hair pin cotter (#6).



QH20 Floating Top Link Installation
Figure 2

Floating Top Link Positioning

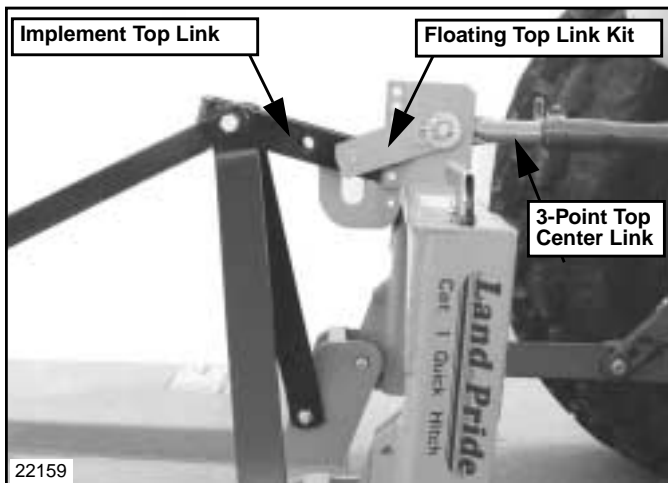
Operating Position

Refer to Figure 3:

1. Park tractor and implement on level ground.
2. Adjust rear gauge wheel(s) to the correct working height.
3. Lower implement with tractor's 3-point lift until the front is at the correct working height. Rear gauge wheel(s) should be on the ground supporting the implement's rear end. If not, lengthen tractor's 3-point top center link until the rear end is supported by the gauge wheel(s).

NOTE: Refer to implement's operating manual for a complete description on how to set the implement to the correct working height.

4. With implement set at the correct working height, adjust 3-point top center link until the floating top two links dip halfway down into the upper hook as shown.

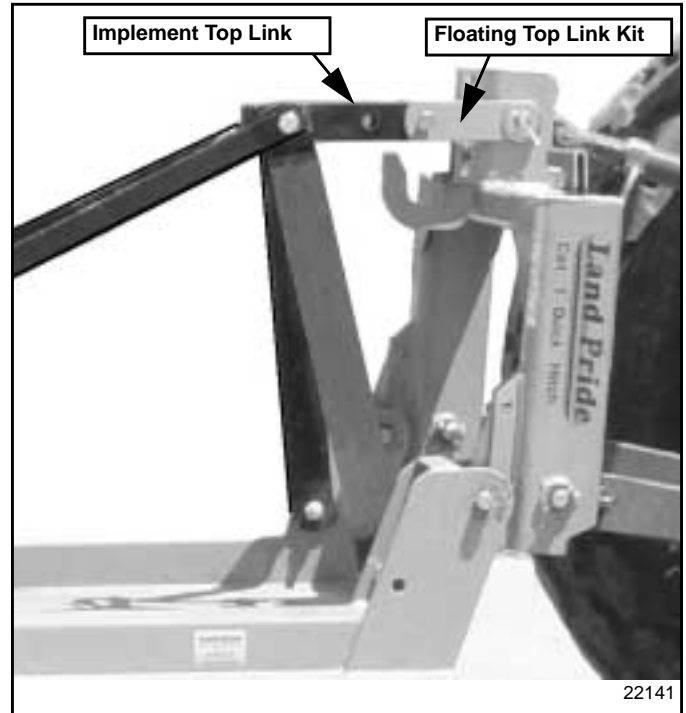


Floating Top Link Position When Tail Wheel & Skid Shoes Are On The Ground
Figure 3

Transporting Position

Refer to Figure 4:

The floating top links should be straight as shown when implement's gauge wheel(s) are raised off the ground.



Floating Top Link Position When Tail Wheel & Skid Shoes Are Off The Ground
Figure 4



Corporate Office: P.O. Box 5060
Salina, Kansas 67402-5060 USA
www.landpride.com
