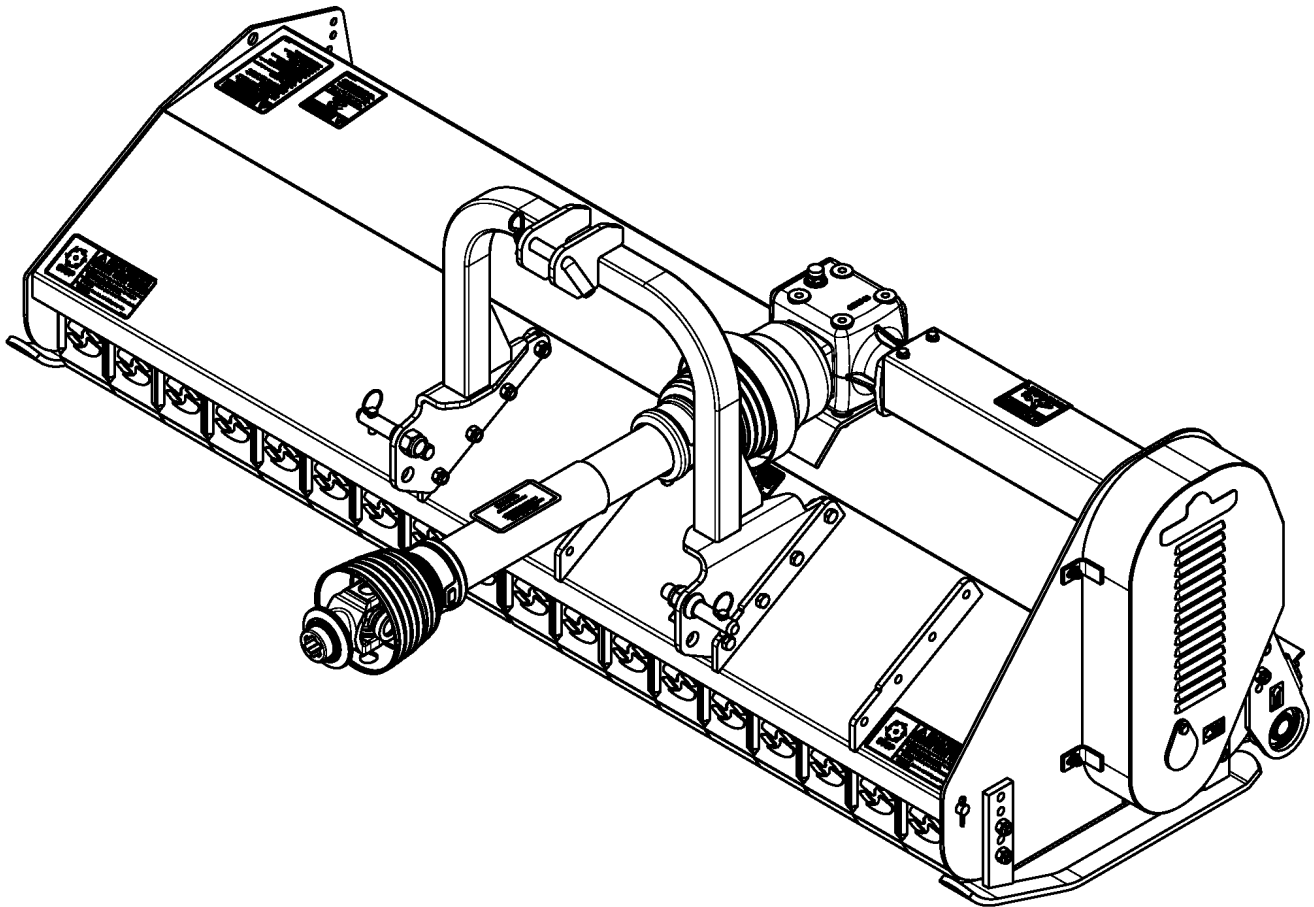


Flail Mower

FM2160 & FM2172



30830

309-069P Parts Manual



Read the Operator's Manual entirely. When you see this symbol, the subsequent instructions and warnings are serious - follow without exception. Your life and the lives of others depend on it!

© Copyright 2017 Printed 12/07/17

Cover photo may show optional equipment not supplied with standard unit.





Table of Contents

Section 1: Introduction.....	4
Using This Manual.....	4
Manual Replacement Information.....	4
Manual Revisions.....	4
Touch-up Paint.....	4
Hardware Legend.....	5
Replacement Hardware.....	5
Serial Numbers.....	5
Part Number Service Coding.....	5
Section 2: Frame and Roller.....	6
Frame & Hitch Components (New).....	6
Frame & Hitch Components (Old).....	8
Rear Roller.....	10
Section 3: Drive and Rotor.....	12
Drive Components (New).....	12
Drive Components (Old).....	14
Driveline (826-339C) Eurocardan.....	16
Gearbox (F80115-00).....	18
Rotor Components.....	20
Section 4: Decals.....	22
Decal Placement.....	22
Land Pride Touch-up Paints.....	24
Part Number Index.....	26

© Copyright 2017. All rights reserved.

Land Pride provides this publication “as is” without warranty of any kind, either expressed or implied. While every precaution has been taken in the preparation of this manual, Land Pride assumes no responsibility for errors or omissions. Neither is any liability assumed for damages resulting from the use of the information contained herein. Land Pride reserves the right to revise and improve its products as it sees fit. This publication describes the state of this product at the time of its publication, and may not reflect the product in the future. The illustrations in this manual are not intended for safe and proper assembly or disassembly of equipment. The illustrations are intended for ordering parts only.

Land Pride is registered trademark.

All other brands and product names are trademarks or registered trademarks of their respective holders.

Printed in the United States of America.



Alphabetized Table of Contents

D	
Decal Placement.....	22
Drive Components (New).....	12
Drive Components (Old).....	14
Driveline (826-339C) Eurocardan.....	16
F	
Frame & Hitch Components (New).....	6
Frame & Hitch Components (Old).....	8
G	
Gearbox (F80115-00).....	18
L	
Land Pride Touch-up Paints.....	24
R	
Rear Roller.....	10
Rotor Components.....	20

General Information

Using This Manual

This manual is divided into sections. The first section contains General Information. The remaining sections divide the machine into segments (i.e. Frames, Drives, Hydraulics, etc.) which illustrate and list all parts. A Parts Number Index is located at the back of the book.

The Land Pride parts in this manual are specially designed for this machine and should be replaced with Land Pride parts only.

The information in this manual is current at time of printing. Some parts may change to assure top performance.

Right-hand and left-hand as used in this manual are determined by facing the direction the machine will travel while in use.

Below is an example of two facing pages from a parts manual. Familiarize yourself with the type of information contained on these pages.

Manual Replacement Information

Replacement manuals are available. Refer to our website at www.landpride.com or e-mail us at lit@landpride.com for additional information. Our website continues to provide the most up-to-date manuals available.

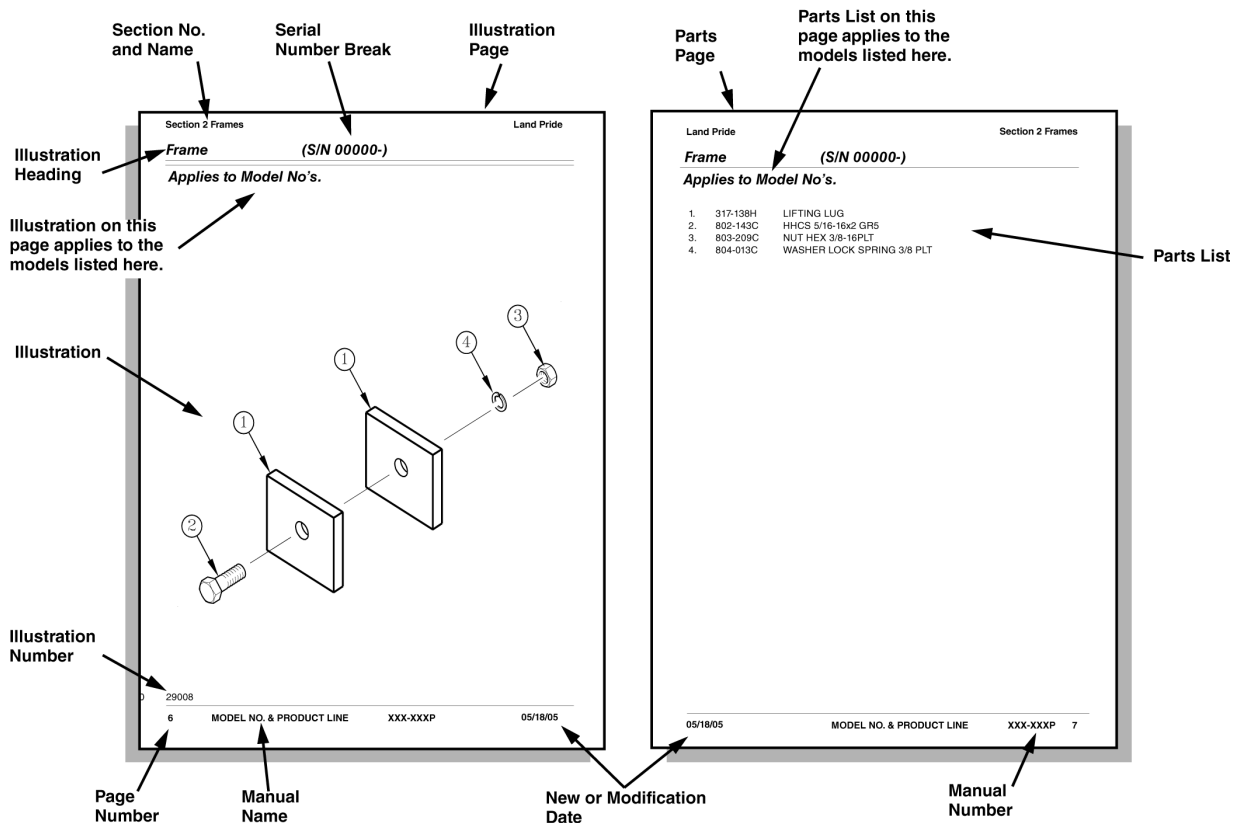
Touch-up Paint

Repaint parts where paint is worn or scratched to prevent rust. Aerosol cans and touch-up bottles with brush applicator are available through your local dealer. Land Pride color descriptions and part numbers are listed below. Also available are quart and gallon size paints. Add QT or GL to end of the Aerosol P/N.

Color	Product*	Aerosol	Touch-Up
Gloss Black	LP	821-070C	821-070CTU
Beige	LP	821-011C	821-011CTU
Green	SLP	821-058C	821-058CTU
Orange	SLP	821-066C	821-066CTU
Red	SLP	821-054C	821-054CTU
Blue	SLP	821-067C	821-067CTU

Notes:

- * LP = All Land Pride Products
- SLP = Select Land Pride Products that are available in optional Green, Orange and Red.



General Information

Hardware Legend

AR	As Required
BLADE	Blade Bolt
C	Cap Screw
CP	Cotter Pin
CPHSSS	Cup Point Hex Socket Set Screw
CPSHSS	Cup Point Square Head Set Screw
CPSQHSS	Cup Point Square Head Set Screw
CRFCHMS3	Cross Recess Flat Countersunk Head Machine Screw
CRPHMS	Cross Recess Pan Head Machine Screw
CRPHTF	Cross Recess Pan Head Thread Forming
CRRHMS	Cross Recess Round Head Machine Screw
CRTHMS	Cross Recess Truss Head Machine Screw
CSNB	Countersunk Square Neck Bolt
FHMS	Flat Head Machine Screw
FTC	Full Thread Cap Screw
H	Hex Nut
HCLN	Hex Center Lock Nut
HFLCS	Hex Flange Lock Cap Screw
HFS	Hex Flange Screw
HFSLN	Hex Flange Serrated Lock Nut
HFSS	Hex Flange Serrated Screw
HHCS	Hex Head Cap Screw or Metric Bolt
HSBHCS	Hex Socket Button Head Cap Screw
HSFCHCS	Hex Socket Flat Countersunk Head Cap Screw
HSHCS	Hex Socket Head Cap Screw
HSSS	Hex Socket Head Screw
HTLN	Hex Top Lock Nut
HWHCS	Hex Washer Head Cap Screw

HWHMS	Hex Washer Head Machine Screw
HXBHCS	Hex Socket Button Head Cap Screw
J	Hex Jam Nut
JIC	37 Degree Tapered Thread
L	Helical Spring Lock Washer
LUG	Lug Bolt
NFC	National Fine Cap Screw
NPSM	National Pipe Straight Mechanical
NPTF	National Pipe Taper Fuel
P	Wide Plain Washer
PHMS	Pan Head Machine Screw
PLOW	Plow Bolt
RHMS	Round Head Machine Screw
RHSNB	Round Head Square Neck Bolt
SCREW LEVELING	Leveling Screw
SCREW THUMB	Thumb Screw
SCREW WELD	Weld Screw
SFCHMS	Slotted Flat Countersunk Head Machine Screw
SFHMS	Slotted Fillister Head Machine Screw
SP	Special
SP SCREW	Special Screw
SQHSS	Square Head Set Screw
SRHMS	Slotted Round Head Machine Screw
SSS	Socket Set Screw
STCS	Self Tapping Cap Screw
STHMS	Slotted Truss Head Machine Screw
WHEEL	Wheel Studs and Hub Long Bolts
WING	Wing Bolt

Replacement Hardware

The **Hardware Legend** above lists hardware abbreviations used in the parts list. All bolts and nuts are Grade 5 unless otherwise noted. The use of improper grades of hardware can result in personal injury, damage to equipment, or loss of property.

Colored Replacement Parts

Land Pride offers replacement parts in factory standard colors and also on select models in Green, Orange, Red and Blue. Because of the variety of colors available, special attention must be given to the part number to prevent ordering the wrong replacement part.

A suffix number corresponding to one of the colors below must be added at the end of Land Pride's part number when ordering a replacement part with that color.

81 Green 83 Red
82 Orange 84 Blue

For example, if you are ordering a replacement part with part number 555-555C and the part you need is red, then add the suffix 83 to the end of the number to make the part number read 555-555C83. Parts ordered without a suffix number will be supplied in factory standard colors.

Black Replacement Parts

Some parts are factory standard black and some must be special ordered black. If your part is special ordered black, a second part number with the additional suffix number 85 on the end will be available. In this situation you must order that part with the suffix number for it to be black. Parts that are factory standard black will not have the suffix number.

Part Number Service Coding

Within the parts list some part numbers are coded for revisions and interchangeability. See notations in revision column.

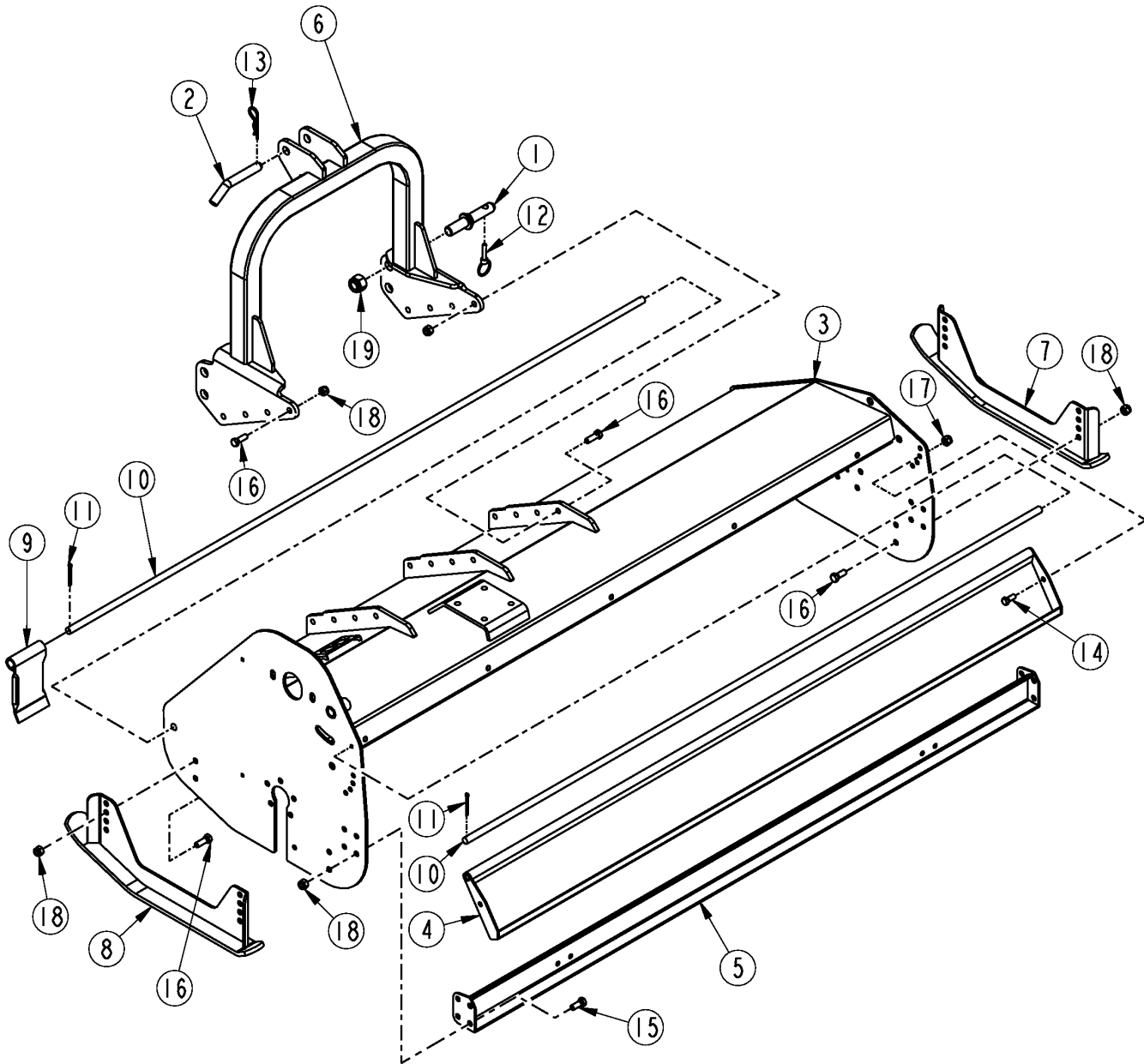
Serial Numbers

Always use the serial and model number when ordering parts. Refer to the Operator's Manual for serial number plate location.

- (S/N 20001+) Includes serial numbers 20001 and above (to the latest number)
- (S/N 10001 to 20000) Includes serial numbers between and including 10001 and 20000
- (S/N 10000-) Includes serial numbers 10000 and below (to the earliest number)

Frame & Hitch Components (New)

Applies to FM2160, FM2172



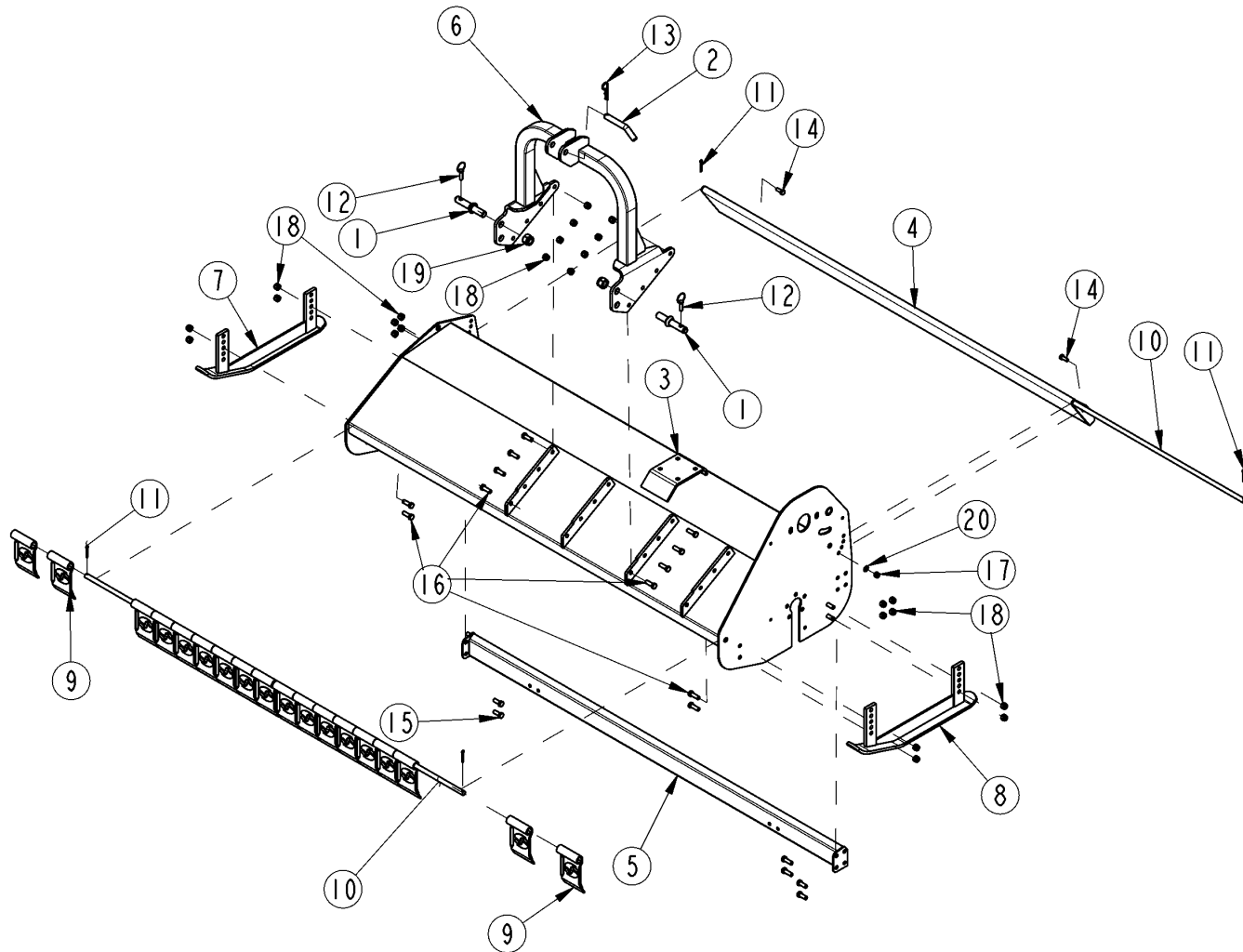
70370

Frame & Hitch Components (New)**Applies to FM2160, FM2172**

Ref	Part No.	Part Description	Comments	Revision
	Dwg 70372	Drawing Image Number		
1.	F4301101	LOWER HITCH PIN		
2.	F4301589	UPPER HITCH PIN		
3.	F5005706	FRAME FM2172		
3.	F5005705	FRAME FM2160		
4.	F5005712	BONNET FM2172		
4.	F5005711	BONNET FM2160		
5.	F5005751	SUPPORT FM2172		
5.	F5005750	SUPPORT FM2160		
6.	F5005764	FIXED HITCH FRAME		
7.	F5005768	SKID		
8.	F5005769	SKID		
9.	F5136109	DEFLECTOR 3.94" WIDE		
10.	F5235706	PIN FM2172		
10.	F5235705	PIN FM2160		
11.	F6340550	PIN COTTER D5X50		
12.	F6350010	LINCH PIN D10		
13.	F6351004	PIN HAIR COTTER D4		
14.	F30210025	RPBY 802-608C	Obsolete	
14.	802-608C	HHCS M10X1.5X25 GR5.6		
15.	F31512030	RPBY F3021112030	Obsolete	
15.	F3021112030	SCREW M12X1.75X30 UNI 5739		
16.	F31512035	RPBY F3021112035	Obsolete	
16.	F3021112035	SCREW M12X1.75X35 UNI 5739		
17.	F34106010	RPBY F3464101010	Obsolete	
17.	F3464101010	SELF LOCKING NUT M10 UNI 7473		
18.	F34106012	RPBY F3464101012	Obsolete	
18.	F3464101012	SELF LOCKING NUT M12 UNI 7473		
19.	F34106024	RPBY F3464101024	Obsolete	
19.	F3464101024	SELF LOCKING NUT M24 UNI 7473		

Frame & Hitch Components (Old)

Applies to FM2160, FM2172



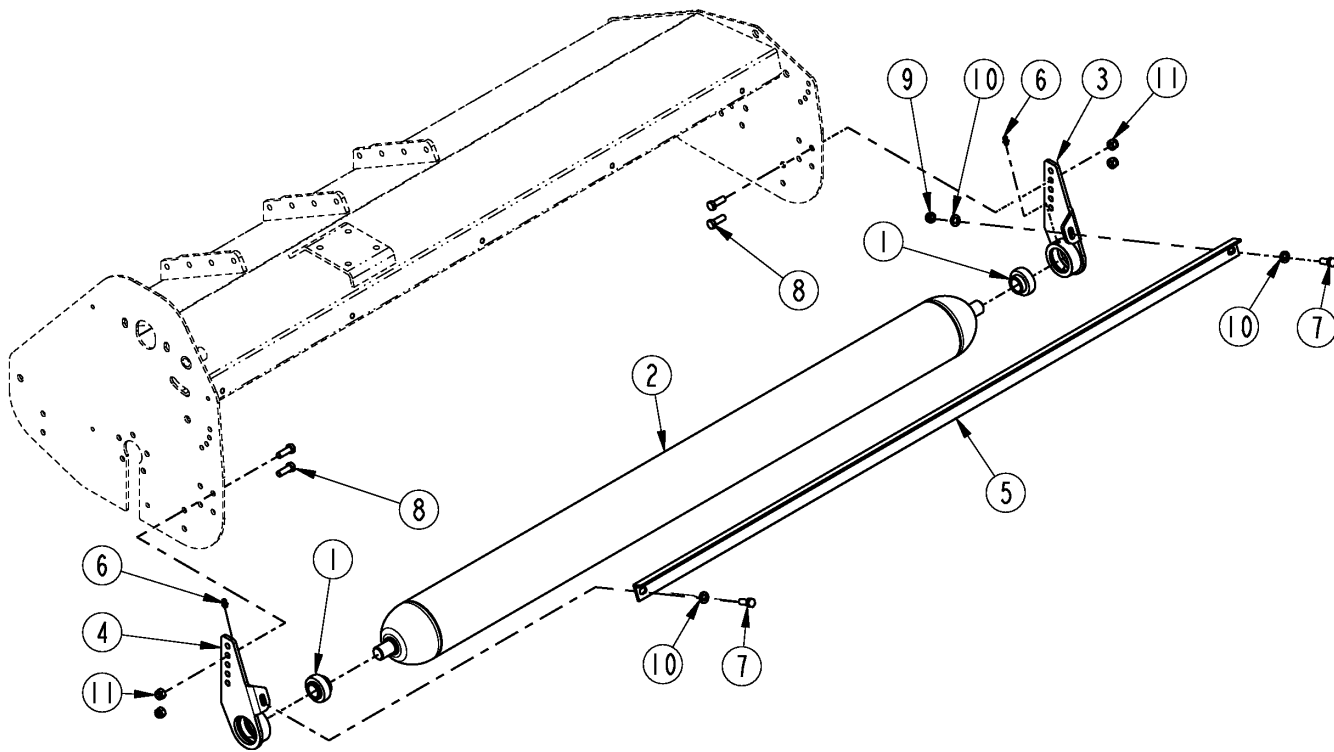
30832

Frame & Hitch Components (Old)**Applies to FM2160, FM2172**

Ref	Part No.	Part Description	Comments	Revision
	Dwg 30832	Drawing Image Number		
1.	F4301101	LOWER HITCH PIN		
2.	F4301589	UPPER HITCH PIN		
3.	F5005706	FRAME FM2172		
3.	F5005705	FRAME FM2160		
4.	F5005712	BONNET FM2172		
4.	F5005711	BONNET FM2160		
5.	F5005751	SUPPORT FM2172		
5.	F5005750	SUPPORT FM2160		
6.	F5005764	FIXED HITCH FRAME		
7.	F5005768	SKID		
8.	F5005769	SKID		
9.	F5136109	DEFLECTOR 3.94" WIDE		
10.	F5235706	PIN FM2172		
10.	F5235705	PIN FM2160		
11.	F6340550	PIN COTTER D5X50		
12.	F6350010	LINCH PIN D10		
13.	F6351004	PIN HAIR COTTER D4		
14.	F30210025	RPBY 802-608C	Obsolete	
15.	F31512030	RPBY F3021112030	Obsolete	
16.	F31512035	RPBY F3021112035	Obsolete	
17.	F34106010	RPBY F3464101010	Obsolete	
18.	F34106012	RPBY F3464101012	Obsolete	
19.	F34106024	RPBY F3464101024	Obsolete	
20.	F34120010	RPBY F3604100010	Obsolete	

Rear Roller

Applies to FM2160, FM2172



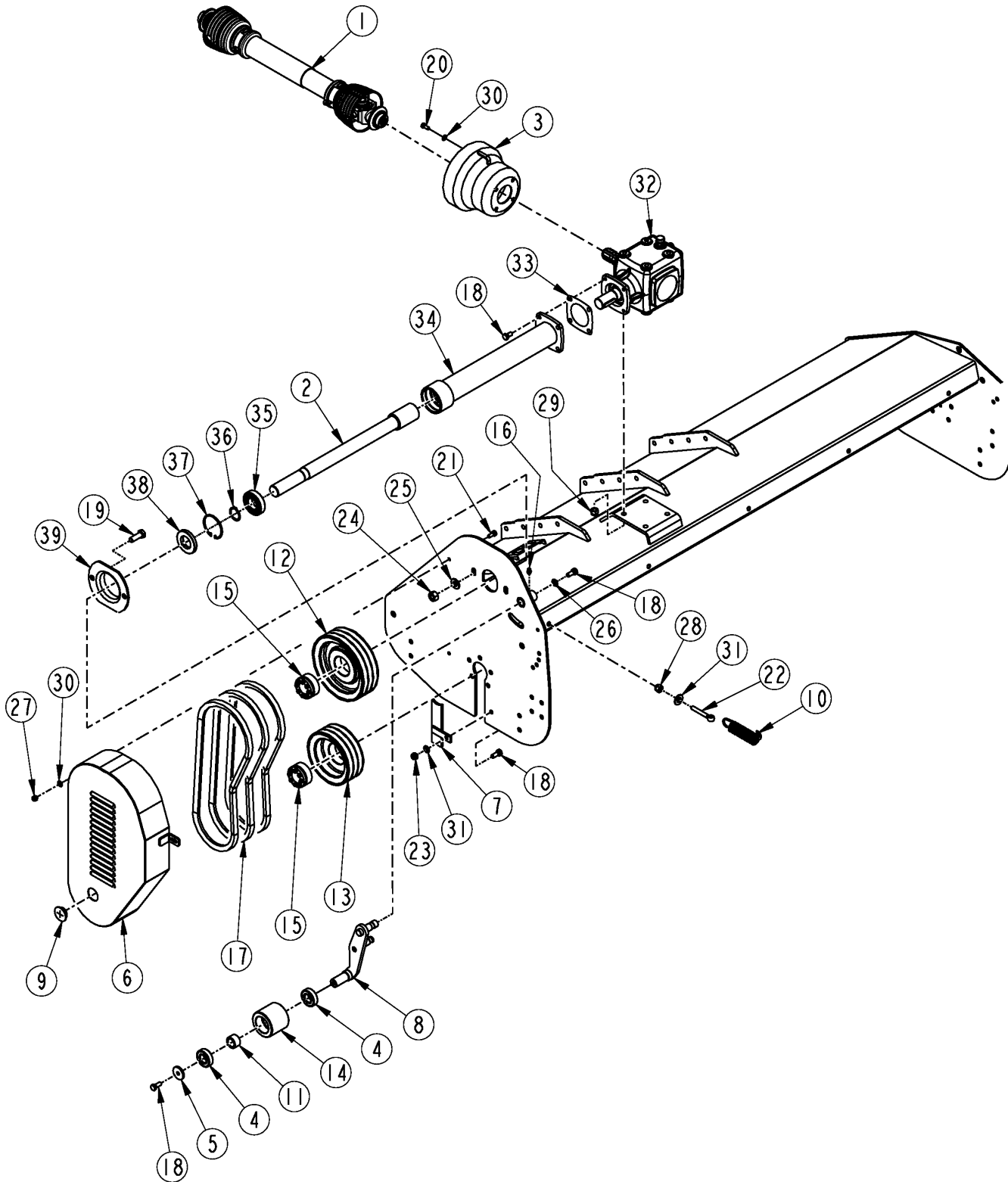
30833

Rear Roller**Applies to FM2160, FM2172**

Ref	Part No.	Part Description	Comments	Revision
	Dwg 30833	Drawing Image Number		
1.	F2030030	BRG YAR 206 - 2 RF		
2.	F5005718	ROLLER FM2172	S/N 776897-	
2.	F5008010	ROLLER FM2172	S/N 776898+	
2.	F5005717	ROLLER FM2160	S/N 776897-	
2.	F5008009	ROLLER FM2160	S/N 776898+	
3.	F5005745	RIGHT ROLLER SUPPORT	S/N 776898+	
3.	F5005758	RIGHT ROLLER SUPPORT	S/N 776897-	
4.	F5005752	LEFT ROLLER SUPPORT	S/N 776898+	
4.	F5005759	LEFT ROLLER SUPPORT	S/N 776897-	
5.	F5865706	SCRAPER FM2172		
5.	F5865705	SCRAPER FM2160		
6.	F6560008	GREASE ZERK M8X1,25		
7.	F31512030	RPBY F3021112030	Obsolete	
7.	F3021112030	SCREW M12X1.75X30 UNI 5739		
8.	F31512035	RPBY F3021112035	Obsolete	
8.	F3021112035	SCREW M12X1.75X35 UNI 5739		
9.	F3464101012	NUT M12 UNI 5587		
10.	F34020012	RPBY F3604100012	Obsolete	
10.	F3604100012	WASHER M12 UNI 6592		
11.	F34106012	RPBY F3464101012	Obsolete	

Drive Components (New)

Applies to FM2160, FM2172



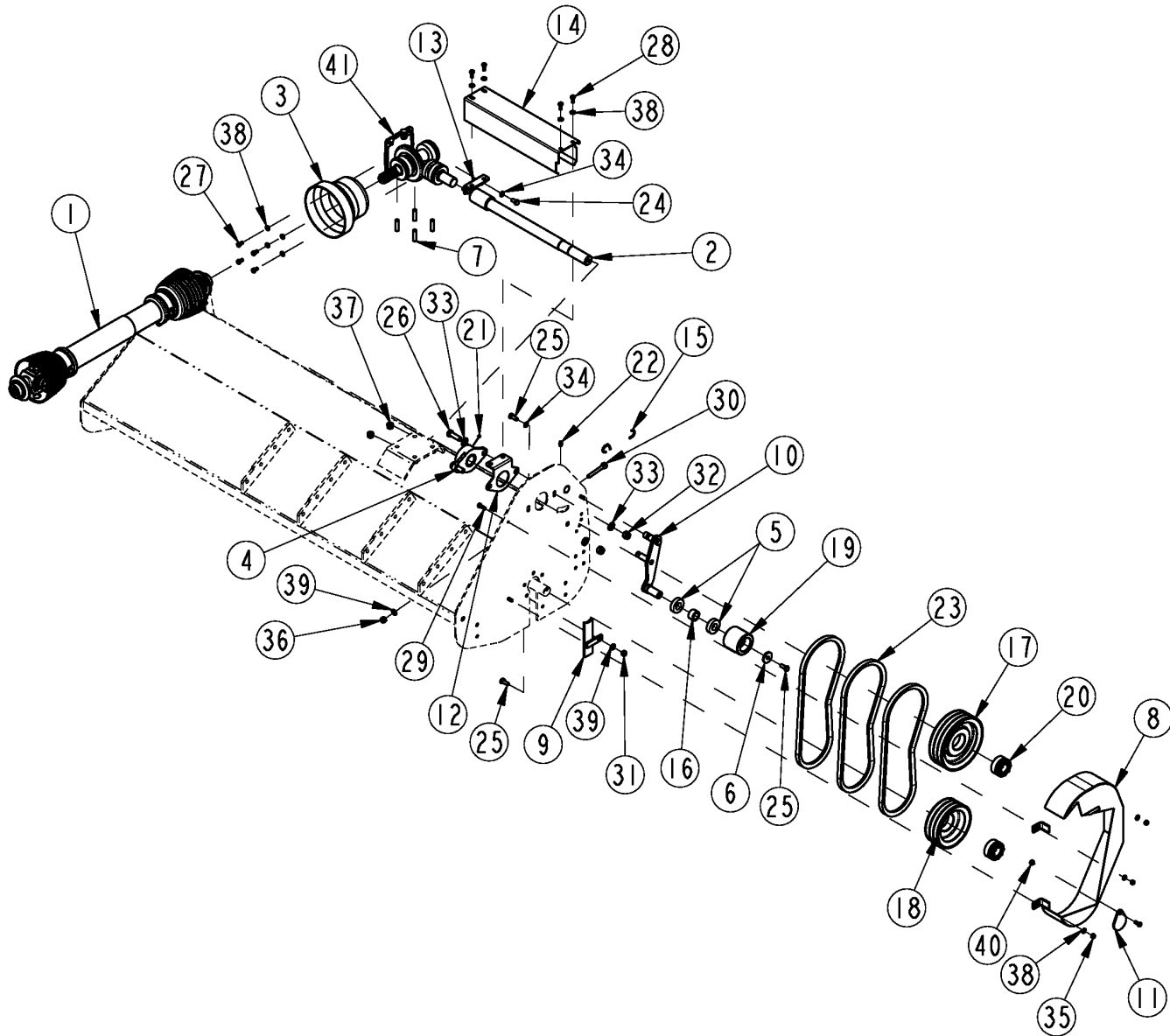
70371

Drive Components (New)**Applies to FM2160, FM2172**

Ref	Part No.	Part Description	Comments	Revision
	Dwg 70371	Drawing Image Number		
1.	826-339C	DRVLN C3 24 1.38-6 QD		
2.	5005422	SHAFT FM2160		
2.	5005423	SHAFT FM2172		
3.	F1883510	DRIVELINE SHIELD		
4.	F2226205	RPBY 822-164C	Obsolete	
4.	822-164C	BRG 25IDX52ODX15 MM 6205 2RS		
5.	F4147552	WASHER		
6.	F5005737	BELT COVER		
7.	F5005740	PROTECTION		
8.	F5005741	LEVER		
9.	F6603516	RUBBER PLUG		
10.	F5815451	SPRING		
11.	F5533008	BUSHING		
12.	F5645153	DRIVING PULLEY 200+3 SDB F65		
13.	F5645157	DRIVING PULLEY FM2160/FM2172		
14.	F5785701	BELT ADJUSTER		
15.	F6363565	SELF-LOCKING UNITS		
16.	F6560008	GREASE ZERK M8X1,25		
17.	F6721048	VBELT B48		
18.	F30210025	RPBY 802-608C	Obsolete	
18.	802-608C	HHCS M10X1.5X25 GR5.6		
19.	F3021114040	SCREW TE M14X40 UNI 5739		
20.	F31508016	RPBY F3021108016	Obsolete	
20.	F3021108016	SCREW TE M8X16 UNI 5739		
21.	F31508025	RPBY F3021108025	Obsolete	
21.	F3021108025	SCREW TE M8X25 UNI 5739		
22.	F3166110105	EYE SCREW M10X105 UNI6058		
23.	F34000010	NUT M10 PG UNI 5587		
24.	F34000014	RPBY F3444101014	Obsolete	
24.	F3444101014	SELF LOCKING NUT M14 DIN 980		
25.	F34020014	RPBY F3604100014	Obsolete	
25.	F3604100014	WASHER M14 UNI 6592		
26.	F3625100010	WASHER M10 UNI 1751		
27.	F34106008	RPBY F3464101008	Obsolete	
27.	F3464101008	SELF LOCKING NUT M8 UNI 7473		
28.	F34106010	RPBY F3464101010	Obsolete	
28.	F3464101010	SELF LOCKING NUT M10 UNI 7473		
29.	F34106012	RPBY F3464101012	Obsolete	
29.	F3464101012	SELF LOCKING NUT M12 UNI 7473		
30.	F34118008	RPBY F3614100008	Obsolete	
30.	F3614100008	FLAT WASHER M8 UNI 6593		
31.	F34120010	RPBY F3604100010	Obsolete	
31.	F3604100010	WASHER M10 UNI 6592		
32.	F80115-00	GEARBOX FM2160/FM2172		
33.	F5785401	GASKET GEARBOX		
34.	F5005447	EXTENSION FM2160		
34.	F5005448	EXTENSION FM2172		
35.	F2106207	RPBY 822-166C	Obsolete	
35.	822-166C	BRG BALL 1.37IDX2.83OD 6207		
36.	F6320035	SNAP RING E D35		
37.	F6310072	SNAP RING 1 O 72		
38.	F6203572	RPBY 6203572	Obsolete	
38.	6203572	EC SEAL (DOUBLE RIMS)		
39.	F5005433	EXTENSION SUPPORT		

Drive Components (Old)

Applies to FM2160, FM2172



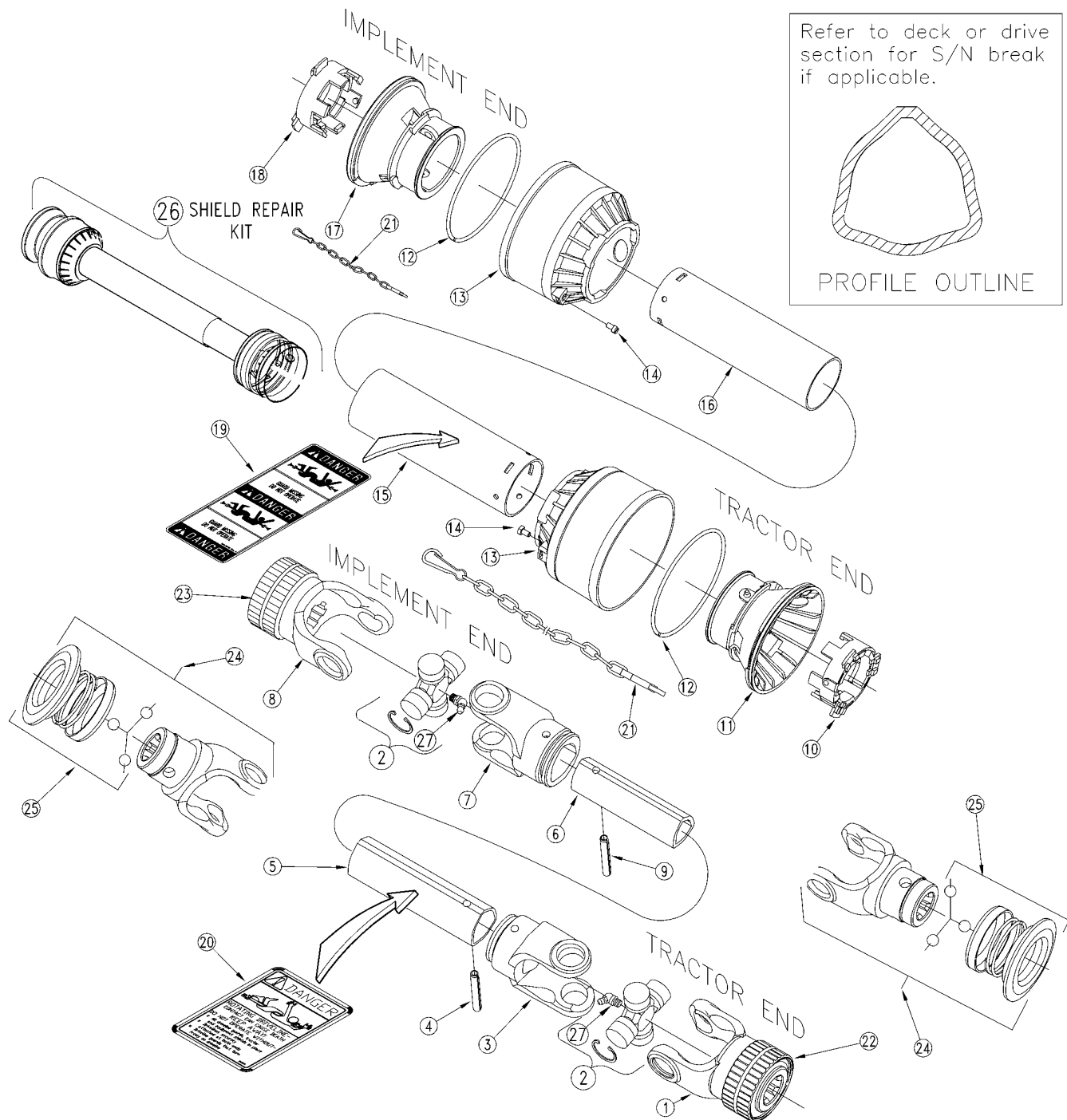
30831

Drive Components (Old)**Applies to FM2160, FM2172**

Ref	Part No.	Part Description	Comments	Revision
	Dwg 30831	Drawing Image Number		
1.	826-339C	DRIVELINE AX4 W/OUT CLUTCH		
2.	F1001108	SHAFT FM2160/FM2172		
3.	F1883510	DRIVELINE SHIELD		
4.	F2020035	BRG FYTB 35 FM 207		
5.	F2226205	BEARING 6204 2RS		
6.	F4147552	LOCK		
7.	F4307516	STUD SCREW M12 L25		
8.	F5005737	BELT COVER		
9.	F5005740	PROTECTION		
10.	F5005741	LEVER		
11.	F5134389	COVER ZERK ACCESS		
12.	F5135755	SUPPORT		
13.	F5135756	SUPPORT		
14.	F5135759	SHIELD FM2160/FM2172		
15.	F5215701	SPRING		
16.	F5533008	BUSHING		
17.	F5645153	DRIVING PULLEY 200+3 SDB F65		
18.	F5645157	DRIVING PULLEY FM2160/FM2172		
19.	F5785701	BELT ADJUSTER		
20.	F6363565	SELF-LOCKING UNITS		
21.	F6560006	GREASE ZERK 45 DEGREE M6		
22.	F6560008	GREASE ZERK M8X1,25		
23.	F6721048	VBELT B48		
24.	F30210020	SCREW TCEI M10X20X1.5		
25.	F30210025	BOLT M10X25 UNI 5739		
26.	F30214045	SCREW M14X45X2 UNI 5739		
27.	F31508016	RPBY F3021108016	Obsolete	
28.	F31508020	RPBY F3021108020	Obsolete	
29.	F31508025	RPBY F3021108025	Obsolete	
30.	F33710096	SCREW M10 L=96		
31.	F34000010	NUT M10 PG UNI 5587		
32.	F34000014	RPBY F3444101014	Obsolete	
33.	F34020014	RPBY F3604100014	Obsolete	
34.	804-163C	WASHER FLAT M13 PLT		
35.	F34106008	RPBY F3464101008	Obsolete	
36.	F34106010	RPBY F3464101010	Obsolete	
37.	F34106012	RPBY F3464101012	Obsolete	
38.	F34118008	RPBY F3614100008	Obsolete	
39.	F34120010	RPBY F3604100010	Obsolete	
40.	F3444101008	NUT M8		
41.	F80115-00	GEARBOX FM2160/FM2172		

Driveline (826-339C) Eurocardan

Applies to FM2160, FM2172



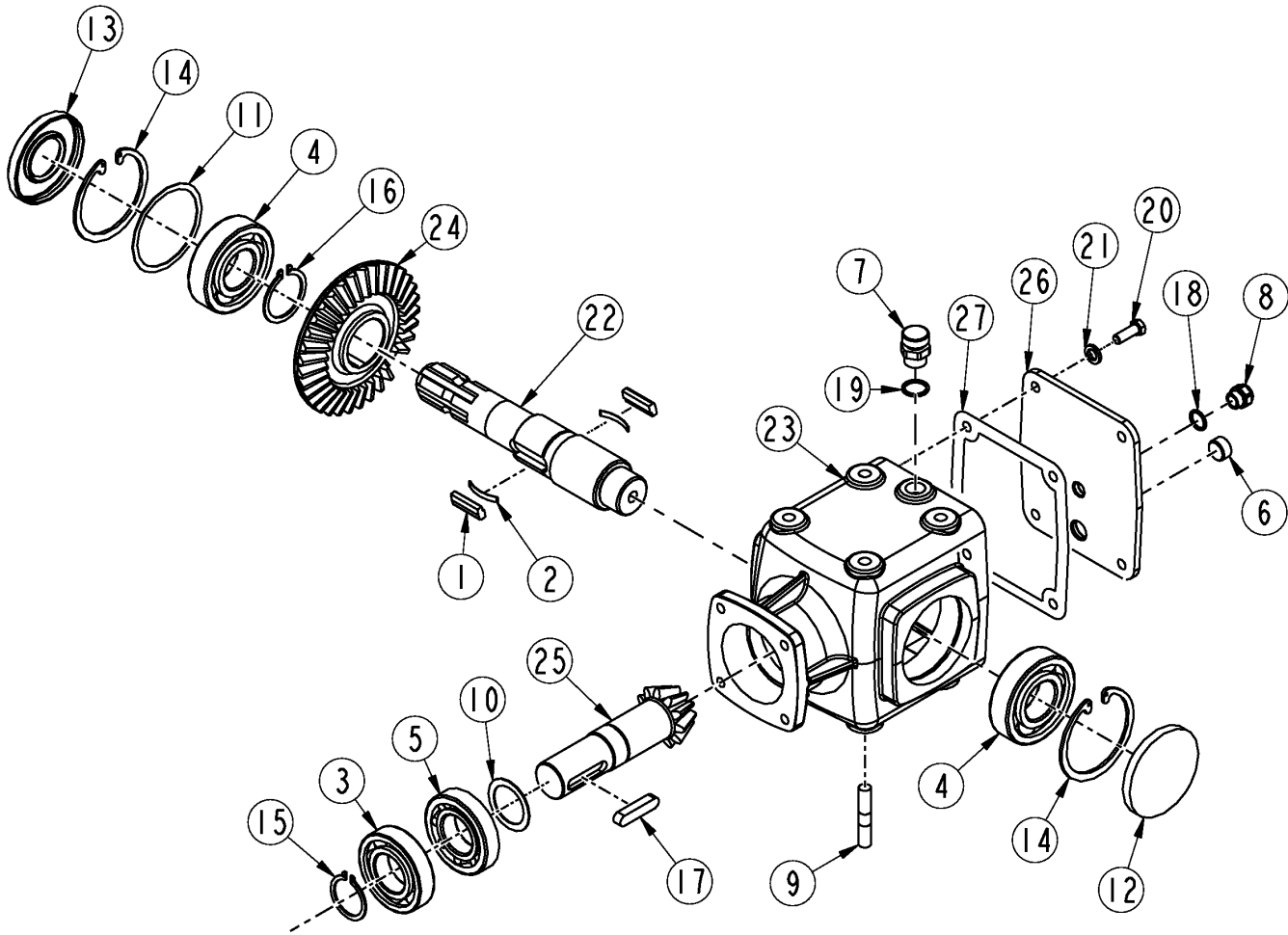
19600

Driveline (826-339C) Eurocardan**Applies to FM2160, FM2172**

Ref	Part No.	Part Description	Comments	Revision
	dwg19600	Drawing Image Number		
	826-339C	DRIVELINE AX4 W/OUT CLUTCH *		
1.	1014013	EC YOKE ASSY (TRACTOR END)		
2.	1004020	EC CROSS ASSEMBLY (U JOINT)		
3.	1704027	EC OUTER TUBE YOKE		
4.	6330860	EC 08X60 1485DIN ROLL PIN		
5.	1524046	EC OUTER TUBE (1524062) 460MM		
6.	1525046	EC INNER TUBE (1525095) 460MM		
7.	1704029	EC INNER TUBE YOKE		
8.	1014013	EC YOKE ASSY (TRACTOR END)		
9.	6330855	EC 8X55-DIN-1481 O/TUBE R/PIN		
10.	1784210	EC TUBE BEARING		
11.	1884201	EC OUTER TUBE RIGID CONE		
12.	1213233	EC STIFFENING RING		
13.	1884203	EC SOFT CONE		
14.	1784212	EC PIN STOP ROTATION		
15.	1873038	EC OUTER TUBE (1873050) 380MM		
16.	1872038	EC INNER TUBE (1872050) 380MM		
17.	1884202	EC INNER TUBE RIGID CONE		
18.	1784211	EC TUBE BEARING		
19.	818-552C	DECAL DANGER PTO DRIVELINE		
20.	818-540C	DECAL DANGER GUARD MISS PTO		
21.	044321	DRIVELINE SHIELD SAFETY CHAIN	S/N 946472-	
22.	1004220	EC TWIST COLLAR KIT (TRT. END)		
23.	1004224	EC TWIST COLLAR KIT (IMP. END)		
24.	1014012	EC YOKE ASSEMBLY		
25.	1004225	EC PULL COLLAR KIT		
26.	826-553C	SHIELD KIT, AX3 & AX4		
27.	084099	WC ZERK M8 X 1 X 45 DEG		

Gearbox (F80115-00)

Applies to FM2160, FM2172



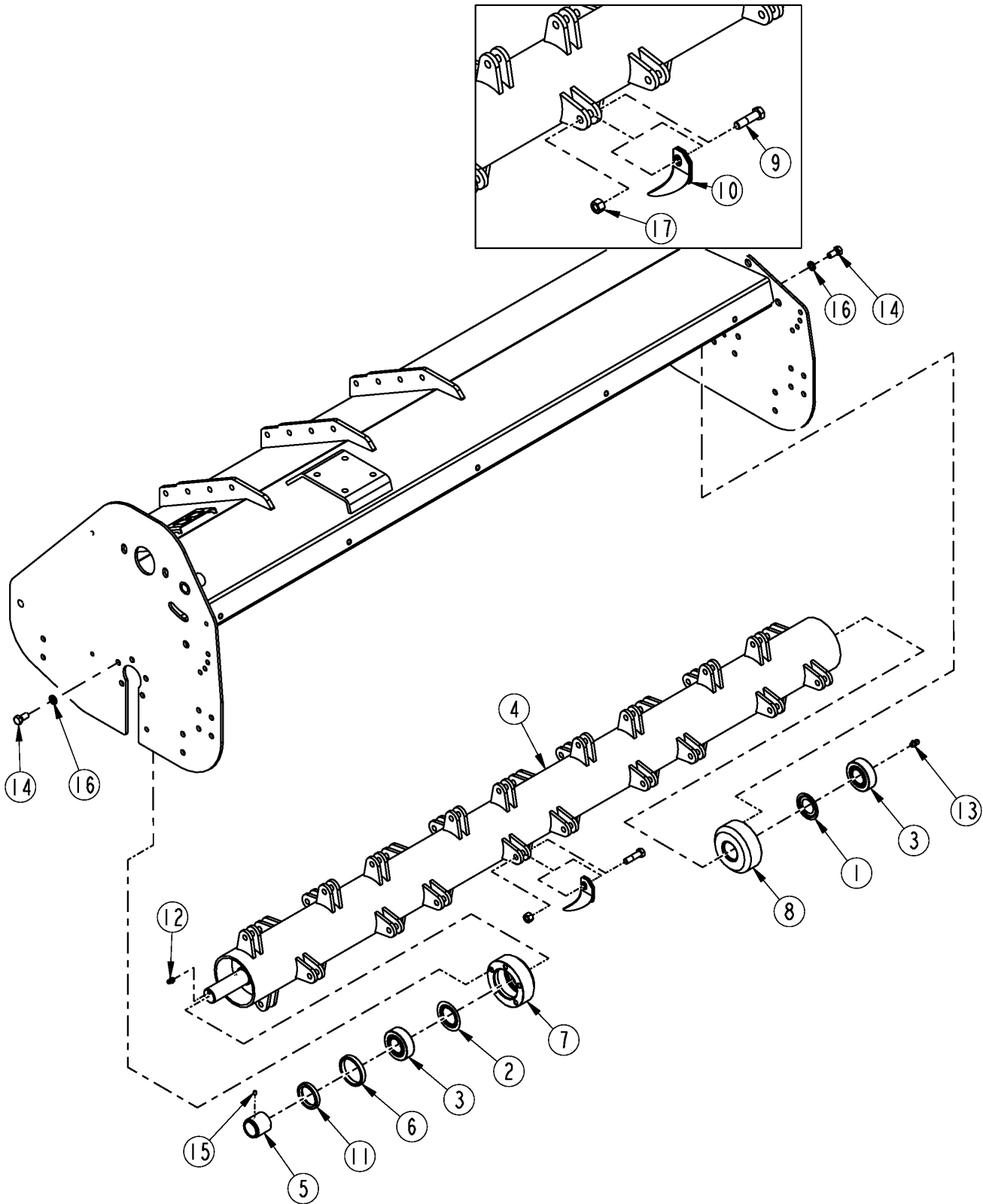
30836

Gearbox (F80115-00)**Applies to FM2160, FM2172**

Ref	Part No.	Part Description	Comments	Revision
	Dwg 30836	Drawing Image Number		
	F80115-00	GEARBOX FM2160/FM2172 *		
1.	F1321001	PAWL		
2.	F1811001	FLAT SPRING		
3.	822-166C	BRG BALL 1.37IDX2.83OD 6207		
4.	F2106307	BEARING 6307		
5.	F2730207	BEARING 30207		
6.	F3441018	BEVEL PLUG 18X1,5		
7.	F3442018	PLUG PRESSURE RELIEF		
8.	F3444014	OIL LEVEL PLUG M14		
9.	F4307516	STUD SCREW M12 L25		
10.	F6013510	SHIM 35X47X1		
11.	F6017008	SHIM 70X80X0.8		
12.	F6100080	COVER		
13.	F6203580	OIL SEAL 35X80X10 PP		
14.	F6310080	SNAP RING I D80		
15.	F6320035	SNAP RING E D35		
16.	F6320042	CIRCLIP E 42mm DIA		
17.	F6361045	KEY		
18.	F6470114	ALUMINUM WASHER M14		
19.	F6470117	RPBY F6470118	Obsolete	
19.	F6470118	ALUMINUM WASHER M18		
20.	F31508020	RPBY F3021108020	Obsolete	
20.	F3021108020	SCREW M8X20 UNI5739		
21.	F34120008	RPBY F3604100008	Obsolete	
21.	F360410008	WASHER M8 UNI 6592		
22.	F12215-01	INPUT SHAFT		
23.	F16515-01	GEARBOX CASE		
24.	F17215-07	BEVEL GEAR Z33		
25.	F17215-08	BEVEL PINION Z11		
26.	F19315-01	BACK COVER		
27.	F20815-01	GASKET		

Rotor Components

Applies to FM2160, FM2172



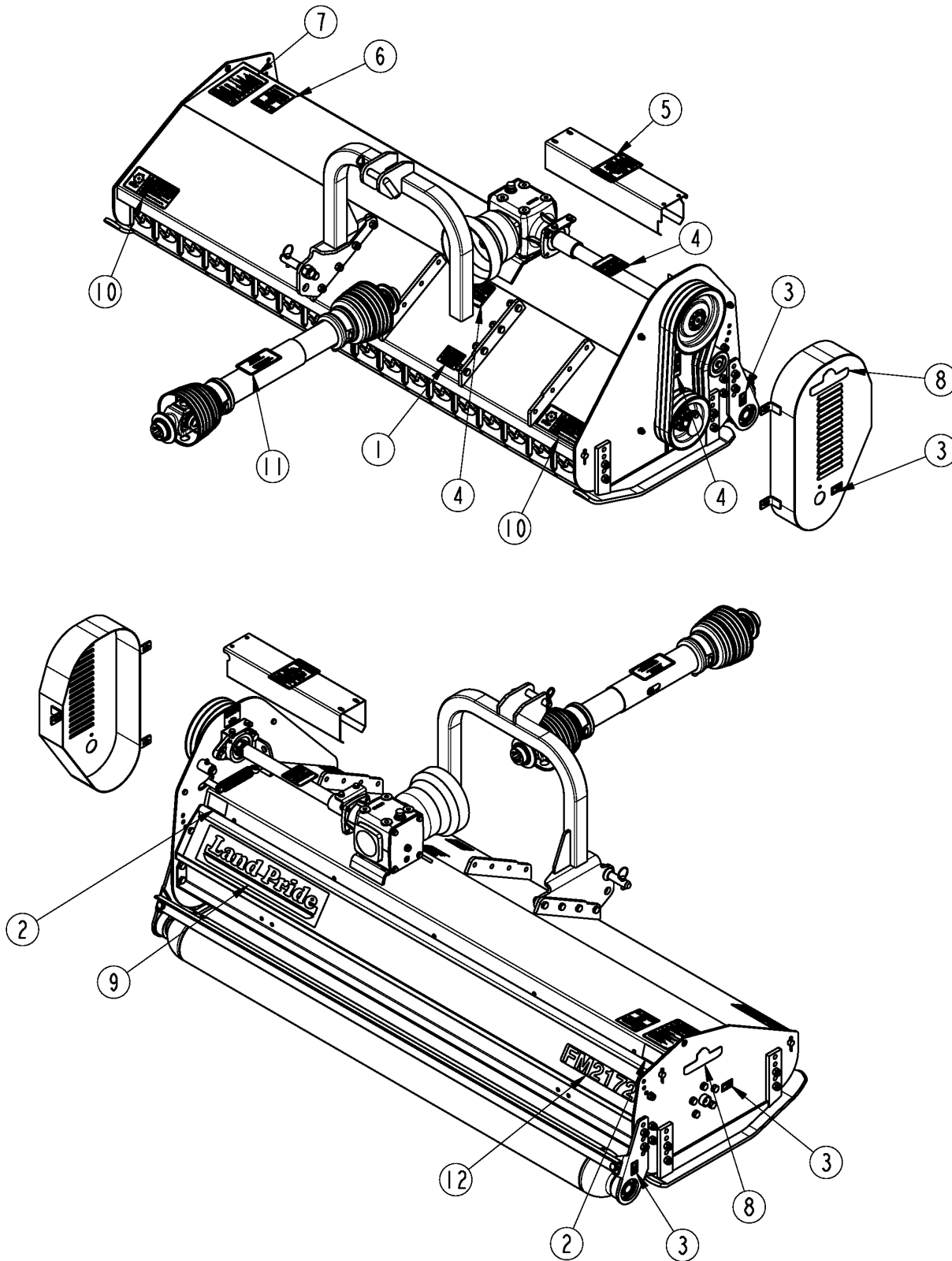
30834

Rotor Components**Applies to FM2160, FM2172**

Ref	Part No.	Part Description	Comments	Revision
	Dwg 30834	Drawing Image Number		
1.	F2022207	SEAL 22207/AV		
2.	F2122207	SEAL 22207/JV		
3.	F2822207	BRG 22207		
4.	F5005605	ROTOR FM2172		
4.	F5005604	ROTOR FM2160		
5.	F5535159	SPACER		
6.	F5595160	METAL RING		
7.	F5705701	SUPPORT		
8.	F5705702	SUPPORT		
9.	F5716503	SCREW M12X1.25X45		
10.	F5817105	DUCKSFOOT BLADE	FM2160 30 EA. FM2172 36 EA.	
11.	F6204562	OIL SEAL D45X62X10 P.P		
12.	F6560008	GREASE ZERK M8X1,25		
13.	F6560010	GREASE NIPPLE M10X1.50		
14.	F30212025	RPBY F3021112025	Obsolete	
14.	F3021112025	SCREW M12X1.75X25 UNI 5739		
15.	F31106010	DOWEL PIN M6X10X1 UNI 5927		
16.	F34022012	RPBY F3625100012	Obsolete	
16.	F3625100012	WASHER M12 DIN 1751		
17.	F3445102012	NUT LOCKING M12X1.25		

Decal Placement

Applies to FM2160, FM2172



70384

Decal Placement**Applies to FM2160, FM2172**

Ref	Part No.	Part Description	Comments	Revision
	Dwg 70384	Drawing Image Number		
1.	818-130C	DECAL CAUTION 540 RPM		
2.	818-230C	DECAL RED REFLECTOR		
3.	818-298C	DECAL GREASE 25HRS BLACK/WHITE		
4.	818-543C	DECAL DANGER PD GUARD MISS SML		
5.	818-552C	DECAL DANGER PTO DRIVELINE		
6.	818-556C	DECAL DANGER THROWN OBJ CUTTER		
7.	818-558C	DECAL WARNING GEN SAFE MOWER		
8.	818-896C	RPBY 838-968C		
8.	838-968C	DECAL LP 6 W/TREE BROWN/GOLD		
9.	818-903C	RPBY 838-965C		
9.	838-965C	DECAL LANDPRIDE 16" BROWN/GOLD		
10.	838-079C	DECAL DANGER ROTATING KNIVES		
11.	838-682C	DECAL PTO 826-339C		
12.	848-636C	DECAL FM2172-BROWN		
12.	848-635C	DECAL FM2160-BROWN		

Land Pride Touch-up Paints

Applies to FM2160, FM2172

No diagram associated with this Parts List

Land Pride Touch-up Paints**Applies to FM2160, FM2172**

Ref	Part No.	Part Description	Comments	Revision
1.	821-011C	LP BEIGE SPRAY CAN	Spray can	
1.	821-070C	GLOSS BLACK SPRAY CAN	Spray can	
1.	821-054C	MED. RED SPRAY TRCK/CTR	Spray can	
1.	821-058C	GREEN SPRAY CUTTERS	Spray can	
1.	821-066C	ORANGE SPRAY CAN	Spray can	
1.	821-067C	BLUE SPRAY CAN	Spray can	
2.	821-011CTU	LP BEIGE TOUCH-UP 5OZ	Touch-up bottle with brush	
2.	821-070CTU	GLOSS BLACK TOUCH-UP 5OZ	Touch-up bottle with brush	
2.	821-054CTU	MED RED TOUCH-UP 5OZ	Touch-up bottle with brush	
2.	821-058CTU	GREEN TOUCH-UP 5OZ	Touch-up bottle with brush	
2.	821-066CTU	ORANGE TOUCH-UP 5OZ	Touch-up bottle with brush	
2.	821-067CTU	BLUE TOUCH-UP 5OZ	Touch-up bottle with brush	
3.	821-011CQT	LP BEIGE QUART	Quart can	
3.	821-070CQT	GLOSS BLACK QUART	Quart can	
3.	821-054CQT	MED RED QUART	Quart can	
3.	821-058CQT	GREEN QUART	Quart can	
3.	821-066CQT	ORANGE QUART	Quart can	
3.	821-067CQT	BLUE QUART	Quart can	
4.	821-011CGL	LP BEIGE GALLON	Gallon can	
4.	821-070CGL	GLOSS BLACK GALLON	Gallon can	
4.	821-054CGL	MED RED GALLON	Gallon can	
4.	821-058CGL	GREEN GALLON	Gallon can	
4.	821-066CGL	ORANGE GALLON	Gallon can	
4.	821-067CGL	BLUE GALLON	Gallon can	



Part Number Index

The Part Number Index is a numeric index of all part numbers included in this manual. The index shows what page(s) the part is used on.

Part Number	Page	Part Number	Page	Part Number	Page	Part Number	Page
044321	17	848-635C	23	F3464101024	7	F6350010	7, 9
084099	17	848-636C	23	F3604100010	13	F6351004	7, 9
1004020	17	Dwg 30831	15	F3604100012	11	F6361045	19
1004220	17	Dwg 30832	9	F3604100014	13	F6363565	13, 15
1004224	17	Dwg 30833	11	F360410008	19	F6470114	19
1004225	17	Dwg 30834	21	F3614100008	13	F6470117	19
1014012	17	Dwg 30836	19	F3625100010	13	F6470118	19
1014013	17	Dwg 70371	13	F3625100012	21	F6560006	15
1213233	17	Dwg 70372	7	F4147552	13, 15	F6560008	11, 13, 15, 21
1524046	17	Dwg 70384	23	F4301101	7, 9	F6560010	21
1525046	17	dwg19600	17	F4301589	7, 9	F6603516	13
1704027	17	F1001108	15	F4307516	15, 19	F6721048	13, 15
1704029	17	F12215-01	19	F5005433	13	F80115-00	13, 15, 19
1784210	17	F1321001	19	F5005447	13		
1784211	17	F16515-01	19	F5005448	13		
1784212	17	F17215-07	19	F5005604	21		
1872038	17	F17215-08	19	F5005605	21		
1873038	17	F1811001	19	F5005705	7, 9		
1884201	17	F1883510	13, 15	F5005706	7, 9		
1884202	17	F19315-01	19	F5005711	7, 9		
1884203	17	F2020035	15	F5005712	7, 9		
5005422	13	F2022207	21	F5005717	11		
5005423	13	F2030030	11	F5005718	11		
6203572	13	F20815-01	19	F5005737	13, 15		
6330855	17	F2106207	13	F5005740	13, 15		
6330860	17	F2106307	19	F5005741	13, 15		
802-608C	7, 13	F2122207	21	F5005745	11		
804-163C	15	F2226205	13, 15	F5005750	7, 9		
818-130C	23	F2730207	19	F5005751	7, 9		
818-230C	23	F2822207	21	F5005752	11		
818-298C	23	F30210020	15	F5005758	11		
818-540C	17	F30210025	7, 9, 13, 15	F5005759	11		
818-543C	23	F3021108016	13	F5005764	7, 9		
818-552C	17, 23	F3021108020	19	F5005768	7, 9		
818-556C	23	F3021108025	13	F5005769	7, 9		
818-558C	23	F3021112025	21	F5008009	11		
818-896C	23	F3021112030	7, 11	F5008010	11		
818-903C	23	F3021112035	7, 11	F5134389	15		
821-011C	25	F3021114040	13	F5135755	15		
821-011CGL	25	F30212025	21	F5135756	15		
821-011CQT	25	F30214045	15	F5135759	15		
821-011CTU	25	F31106010	21	F5136109	7, 9		
821-054C	25	F31508016	13, 15	F5215701	15		
821-054CGL	25	F31508020	15, 19	F5235705	7, 9		
821-054CQT	25	F31508025	13, 15	F5235706	7, 9		
821-054CTU	25	F31512030	7, 9, 11	F5533008	13, 15		
821-058C	25	F31512035	7, 9, 11	F5535159	21		
821-058CGL	25	F3166110105	13	F5595160	21		
821-058CQT	25	F33710096	15	F5645153	13, 15		
821-058CTU	25	F34000010	13, 15	F5645157	13, 15		
821-066C	25	F34000014	13, 15	F5705701	21		
821-066CGL	25	F34020012	11	F5705702	21		
821-066CQT	25	F34020014	13, 15	F5716503	21		
821-066CTU	25	F34022012	21	F5785401	13		
821-067C	25	F34106008	13, 15	F5785701	13, 15		
821-067CGL	25	F34106010	7, 9, 13, 15	F5815451	13		
821-067CQT	25	F34106012	7, 9, 11, 13, 15	F5817105	21		
821-067CTU	25	F34106024	7, 9	F5865705	11		
821-070C	25	F34118008	13, 15	F5865706	11		
821-070CGL	25	F34120008	19	F6013510	19		
821-070CQT	25	F34120010	9, 13, 15	F6017008	19		
821-070CTU	25	F3441018	19	F6100080	19		
822-164C	13	F3442018	19	F6203572	13		
822-166C	13, 19	F3444014	19	F6203580	19		
826-339C	13, 15, 17	F3444101008	15	F6204562	21		
826-553C	17	F3444101014	13	F6310072	13		
838-079C	23	F3445102012	21	F6310080	19		
838-682C	23	F3464101008	13	F6320035	13, 19		
838-965C	23	F3464101010	7, 13	F6320042	19		
838-968C	23	F3464101012	7, 11, 13	F6340550	7, 9		

This Page Intentionally Left Blank



Great Plains Manufacturing, Inc.

Corporate Office: P.O. Box 5060
Salina, Kansas 67402-5060 USA

www.landpride.com
