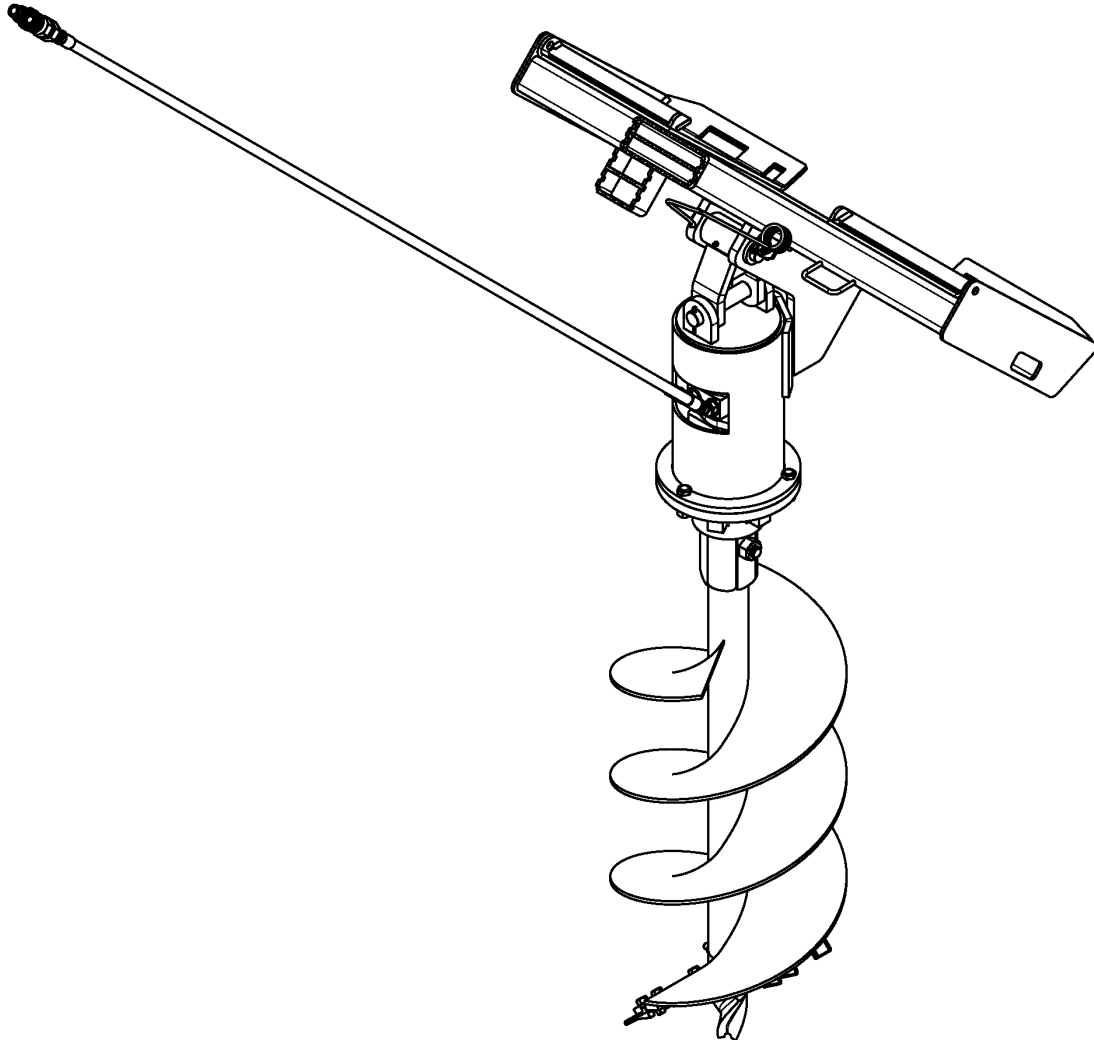


Post Hole Digger

AP-SA35



37686

317-093PK
Parts Manual

Kubota®



Read the Operator's Manual entirely. When you see this symbol, the subsequent instructions and warnings are serious - follow without exception. Your life and the lives of others depend on it!

© Copyright 2016 Printed 12/13/16

Cover photo may show optional equipment not supplied with standard unit.



Table of Contents

Section 1: Introduction.....	4
Using This Manual.....	4
Manual Replacement Information.....	4
Manual Revisions.....	4
Touch-up Paint.....	4
Hardware Legend.....	5
Replacement Hardware.....	5
Serial Numbers.....	5
Part Number Service Coding.....	5
Section 2: Frames.....	6
Gearbox Housing.....	6
Hitch.....	8
Section 3: Gearboxes.....	10
Gearbox (826-313C) (826-314C).....	10
Section 4: Hydraulic Motor.....	12
Hydraulic Motor (810-531C) White.....	12
Hydraulic Motor (850-252C) White.....	14
Section 5: Labels.....	16
Kubota Touch-up Paints.....	16
Label Placement.....	18
Section 6: Options & Accessories.....	20
Auger.....	20
Part Number Index.....	22

© Copyright 2016. All rights reserved.

Kubota provides this publication “as is” without warranty of any kind, either expressed or implied. While every precaution has been taken in the preparation of this manual, Kubota assumes no responsibility for errors or omissions. Neither is any liability assumed for damages resulting from the use of the information contained herein. Kubota reserves the right to revise and improve its products as it sees fit. This publication describes the state of this product at the time of its publication, and may not reflect the product in the future. The illustrations in this manual are not intended for safe and proper assembly or disassembly of equipment. The illustrations are intended for ordering parts only.

Kubota is registered trademark.

All other brands and product names are trademarks or registered trademarks of their respective holders.

Printed in the United States of America.



Alphabetized Table of Contents

A	
Auger.....	20
G	
Gearbox (826-313C) (826-314C).....	10
Gearbox Housing.....	6
H	
Hitch.....	8
Hydraulic Motor (810-531C) White.....	12
Hydraulic Motor (850-252C) White.....	14
K	
Kubota Touch-up Paints.....	16
L	
Label Placement.....	18

General Information

Using This Manual

This manual is divided into sections. The first section contains General Information. The remaining sections divide the machine into segments (i.e. Frames, Drives, Hydraulics, etc.) which illustrate and list all parts. A Parts Number Index is located at the back of the book.

The Kubota parts in this manual are specially designed for this machine and should be replaced with Kubota parts only.

The information in this manual is current at time of printing. Some parts may change to assure top performance.

Right-hand and left-hand as used in this manual are determined by facing the direction the machine will travel while in use.

Below is an example of two facing pages from a parts manual. Familiarize yourself with the type of information contained on these pages.

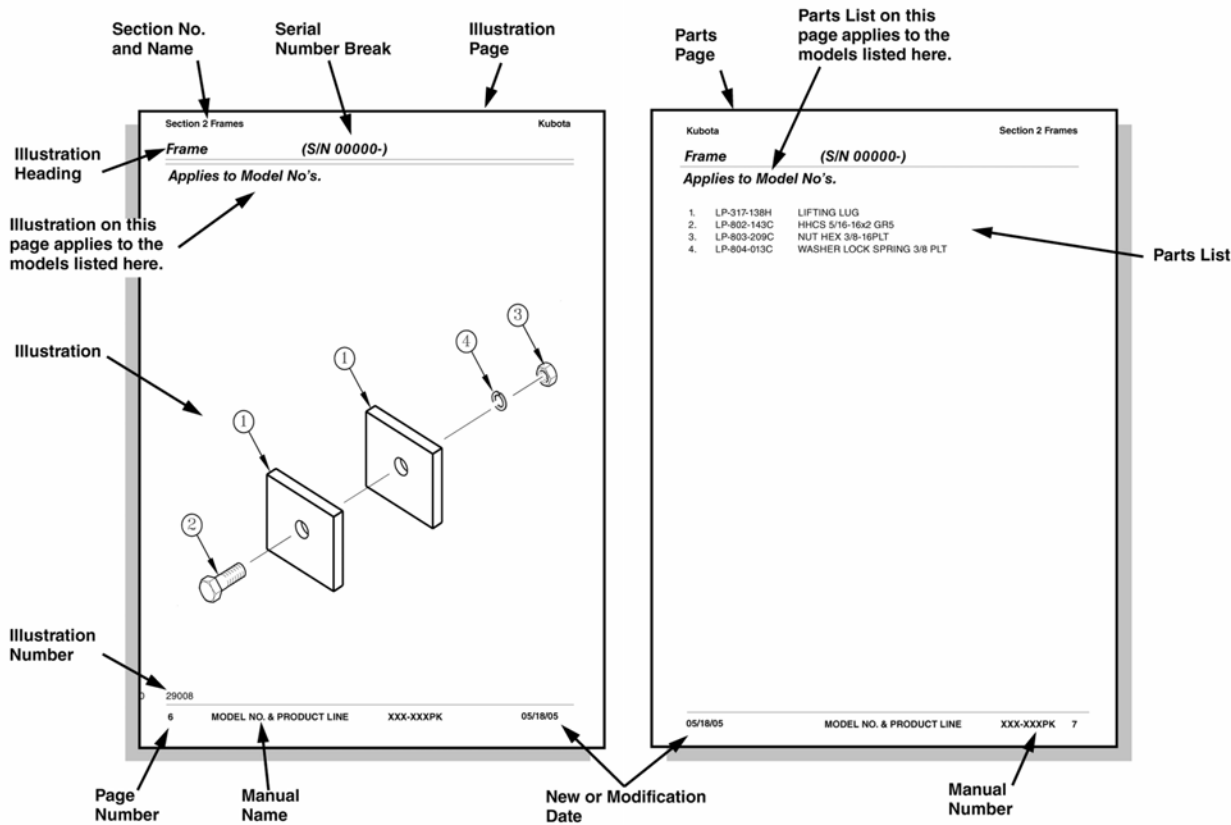
Manual Replacement Information

Replacement manuals are available. Refer to our website at www.kubota.com for additional information. Our website continues to provide the most up-to-date manuals available.

Touch-up Paint

Repaint parts where paint is worn or scratched to prevent rust. Kubota touch-up paints are available through your local Kubota dealer. Part numbers and color descriptions are listed below.

Part No.	Part Description
821-070C	GP Gloss black enamel spray can
821-070CTU	GP Gloss black enamel bottle with brush
821-070CQT	GP Gloss black enamel quart
821-070CGL	GP Gloss black enamel gallon



General Information

Hardware Legend

AR	As Required
BLADE	Blade Bolt
C	Cap Screw
CP	Cotter Pin
CPHSSS	Cup Point Hex Socket Set Screw
CPSHSS	Cup Point Square Head Set Screw
CPSQHSS	Cup Point Square Head Set Screw
CRFCHMS3	Cross Recess Flat Countersunk Head Machine Screw
CRPHMS	Cross Recess Pan Head Machine Screw
CRPHTFS	Cross Recess Pan Head Thread Forming
CRRHMS	Cross Recess Round Head Machine Screw
CRTHMS	Cross Recess Truss Head Machine Screw
CSNB	Countersunk Square Neck Bolt
FHMS	Flat Head Machine Screw
FTC	Full Thread Cap Screw
H	Hex Nut
HCLN	Hex Center Lock Nut
HFLCS	Hex Flange Lock Cap Screw
HFS	Hex Flange Screw
HFSLN	Hex Flange Serrated Lock Nut
HFSS	Hex Flange Serrated Screw
HHCS	Hex Head Cap Screw or Metric Bolt
HSBHCS	Hex Socket Button Head Cap Screw
HSFCHCS	Hex Socket Flat Countersunk Head Cap Screw
HSHCS	Hex Socket Head Cap Screw
HSSS	Hex Socket Head Screw
HTLN	Hex Top Lock Nut
HWHCS	Hex Washer Head Cap Screw

HWHMS	Hex Washer Head Machine Screw
HXBHCS	Hex Socket Button Head Cap Screw
J	Hex Jam Nut
JIC	37 Degree Tapered Thread
L	Helical Spring Lock Washer
LUG	Lug Bolt
NFC	National Fine Cap Screw
NPSM	National Pipe Straight Mechanical
NPTF	National Pipe Taper Fuel
P	Wide Plain Washer
PHMS	Pan Head Machine Screw
PLOW	Plow Bolt
RHMS	Round Head Machine Screw
RHSNB	Round Head Square Neck Bolt
SCREW LEVELING	Leveling Screw
SCREW THUMB	Thumb Screw
SCREW WELD	Weld Screw
SFCHMS	Slotted Flat Countersunk Head Machine Screw
SFHMS	Slotted Fillister Head Machine Screw
SP	Special
SP SCREW	Special Screw
SQHSS	Square Head Set Screw
SRHMS	Slotted Round Head Machine Screw
SSS	Socket Set Screw
STCS	Self Tapping Cap Screw
STHMS	Slotted Truss Head Machine Screw
WHEEL	Wheel Studs and Hub Long Bolts
WING	Wing Bolt

Replacement Hardware

The **Hardware Legend** above lists hardware abbreviations used in the parts list. All bolts and nuts are Grade 5 unless otherwise noted. The use of improper grades of hardware can result in personal injury, damage to equipment, or loss of property.

Part Number Service Coding

Within the parts list some part numbers are coded for revisions and interchangeability. See notations in revision column.

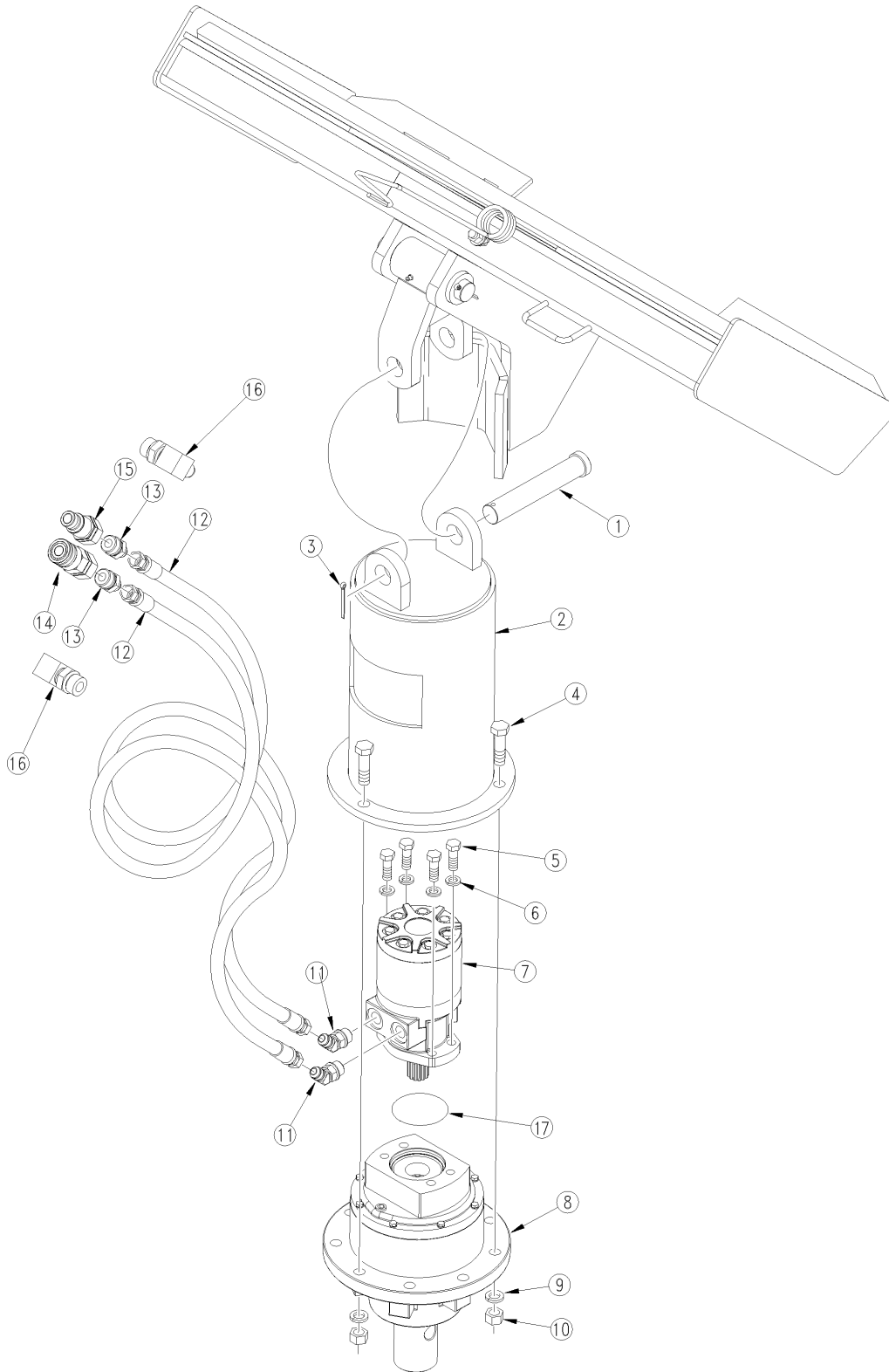
Serial Numbers

Always use the serial and model number when ordering parts. Refer to the Operator's Manual for serial number plate location.

- (S/N 20001+) Includes serial numbers 20001 and above (to the latest number)
- (S/N 10001 to 20000) Includes serial numbers between and including 10001 and 20000
- (S/N 10000-) Includes serial numbers 10000 and below (to the earliest number)

Gearbox Housing

Applies to AP-SA35



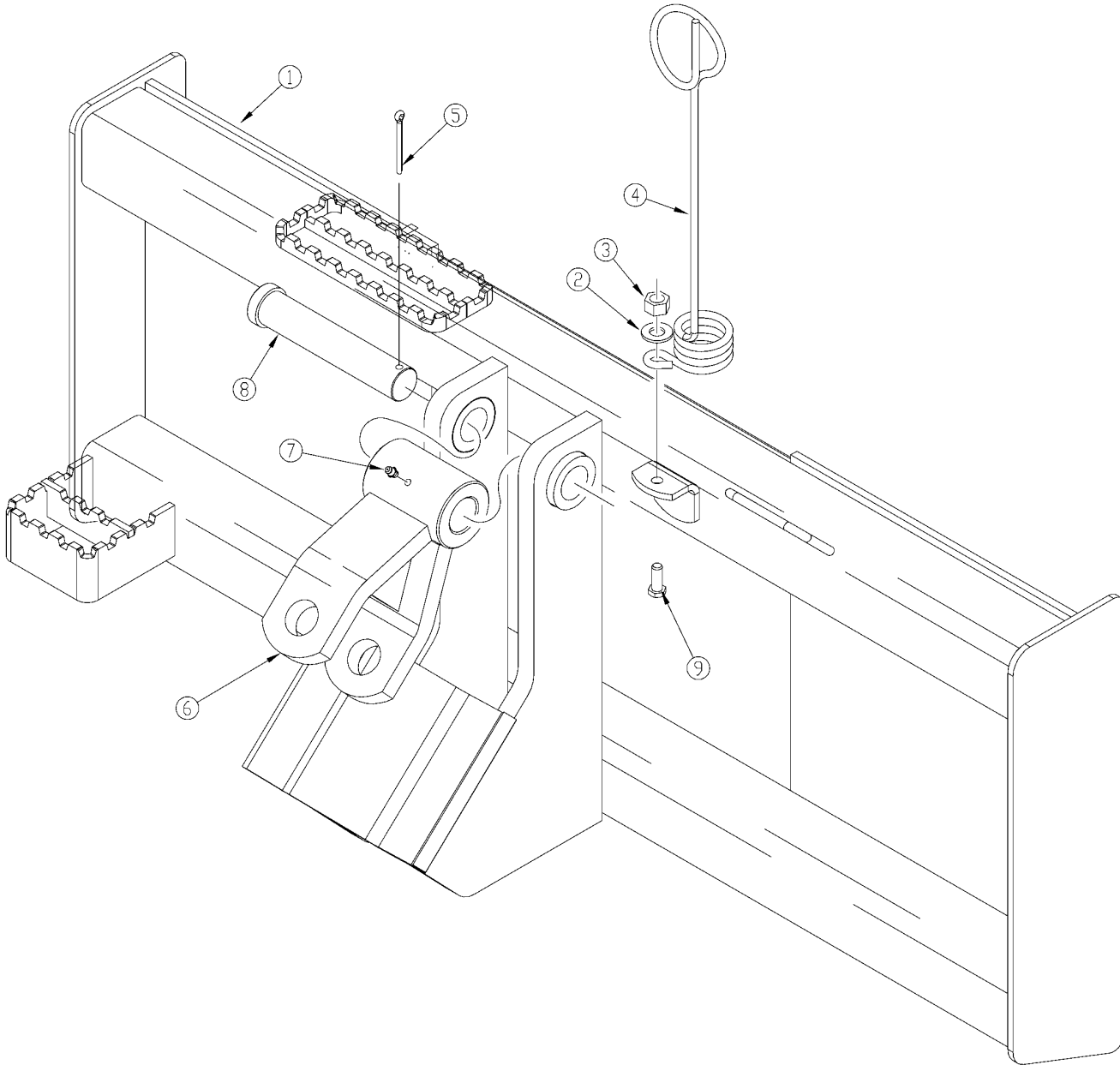
19241

Gearbox Housing**Applies to AP-SA35**

Ref	Part No.	Part Description	Comments	Revision
	Dwg 19241	Drawing Image Number		
1.	805-312C	PIN CLEVIS 1 1/4 X 6 7/8 USBL		
2.	317-086H	HYD. AUGER MOUNT WELD., PLANET		
3.	805-058C	PIN COTTER 3/16 X 2		
4.	802-057C	HHCS 5/8-11X2 1/4 GR5		
5.	802-091C	HHCS 1/2-13X1 1/2 GR5		
6.	804-015C	WASHER LOCK SPRING 1/2 PLT		
7.	850-252C	HYD MTR 18 CU IN DSP W/14T SPL	S/N _____+	
7.	810-531C	HYD MTR 18 CU IN DSP W/14T SPL	S/N _____-	
8.	826-313C	GBOX 3.75:1 14T PLNTRY 2 9/16		
8.	826-314C	GBOX 3.75:1 14T PLNTRY 2 HEX		
9.	804-022C	WASHER LOCK SPRING 5/8 PLT		
10.	803-021C	NUT HEX 5/8-11 PLT		
11.	811-778C	EL 45 7/8MORB 3/4MJIC		
12.	811-779C	HH1/2R2 096 3/4FJIC E-Z FLEX		
13.	811-205C	AD 3/4MJIC 1 1/16MORB	As Required	
14.	811-745C	CP 1 1/16FORB FEMALE QUICK		
15.	811-744C	CP 1 1/16FORB MALE QUICK		
16.	811-091C	EL 3/4MJIC 1 1/16MORB	As Required	
17.	816-836C	O-RING 3 1/4ID X 3 3/8OD	S/N 1003413K+	

Hitch

Applies to AP-SA35



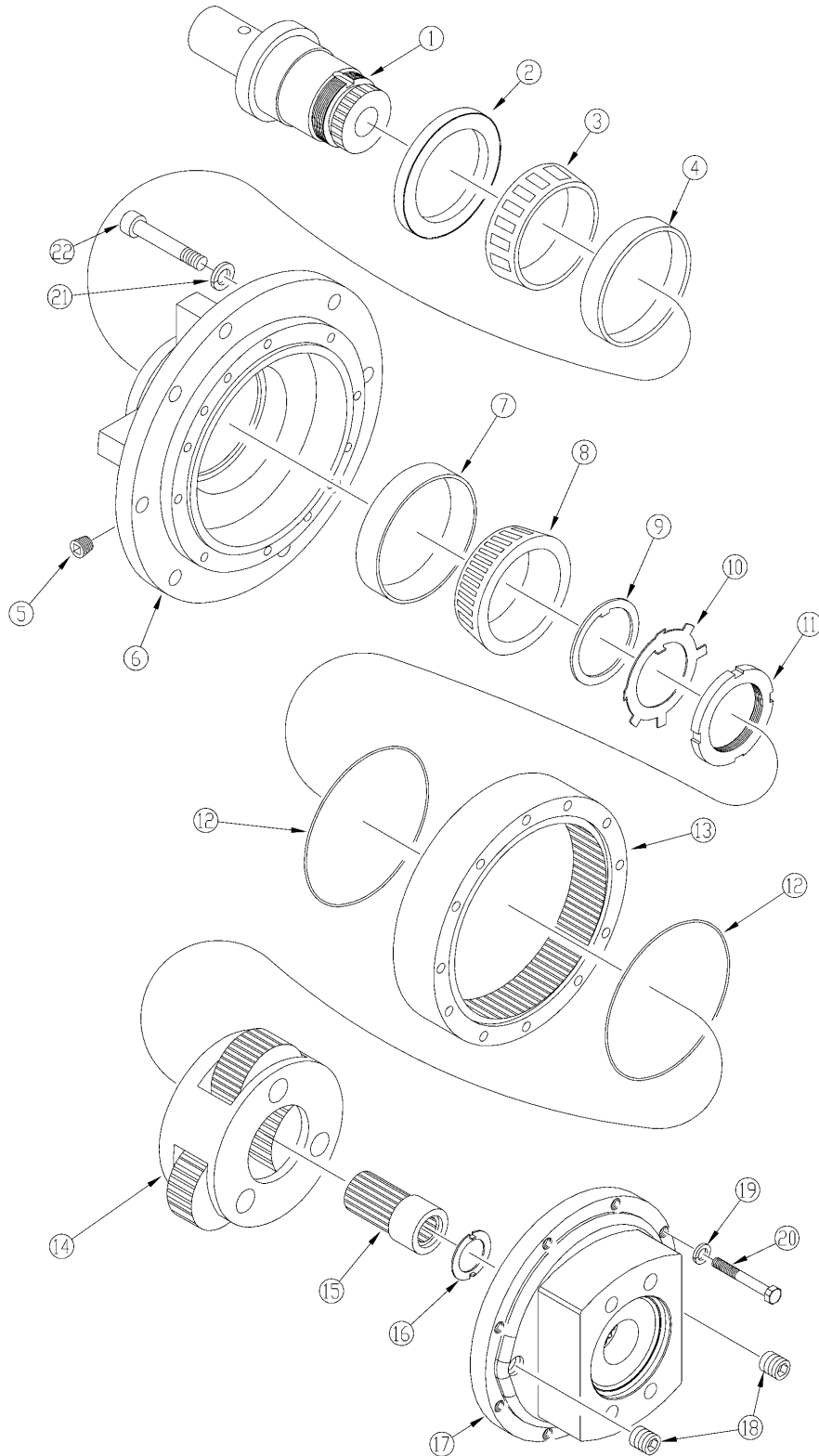
19240

Hitch**Applies to AP-SA35**

Ref	Part No.	Part Description	Comments	Revision
	Dwg 19240	Drawing Image Number		
1.	317-084H	HYDRAULIC AUGER HITCH WELDMENT		
2.	804-011C	WASHER FLAT 3/8 USS PLT		
3.	803-013C	NUT LOCK 3/8-16 PLT		
4.	807-023C	SPRING HOSE LOOP		
5.	805-058C	PIN COTTER 3/16 X 2		
6.	317-085H	HYD. AUGER CLEVIS WELDMENT		
7.	800-080C	GREASE ZERK 1/4-28 THD FORMING		
8.	805-311C	PIN CLEVIS 1 1/4 X 6 USABLE		
9.	802-017C	HHCS 3/8-16X1 GR5		

Gearbox (826-313C) (826-314C)

Applies to AP-SA35



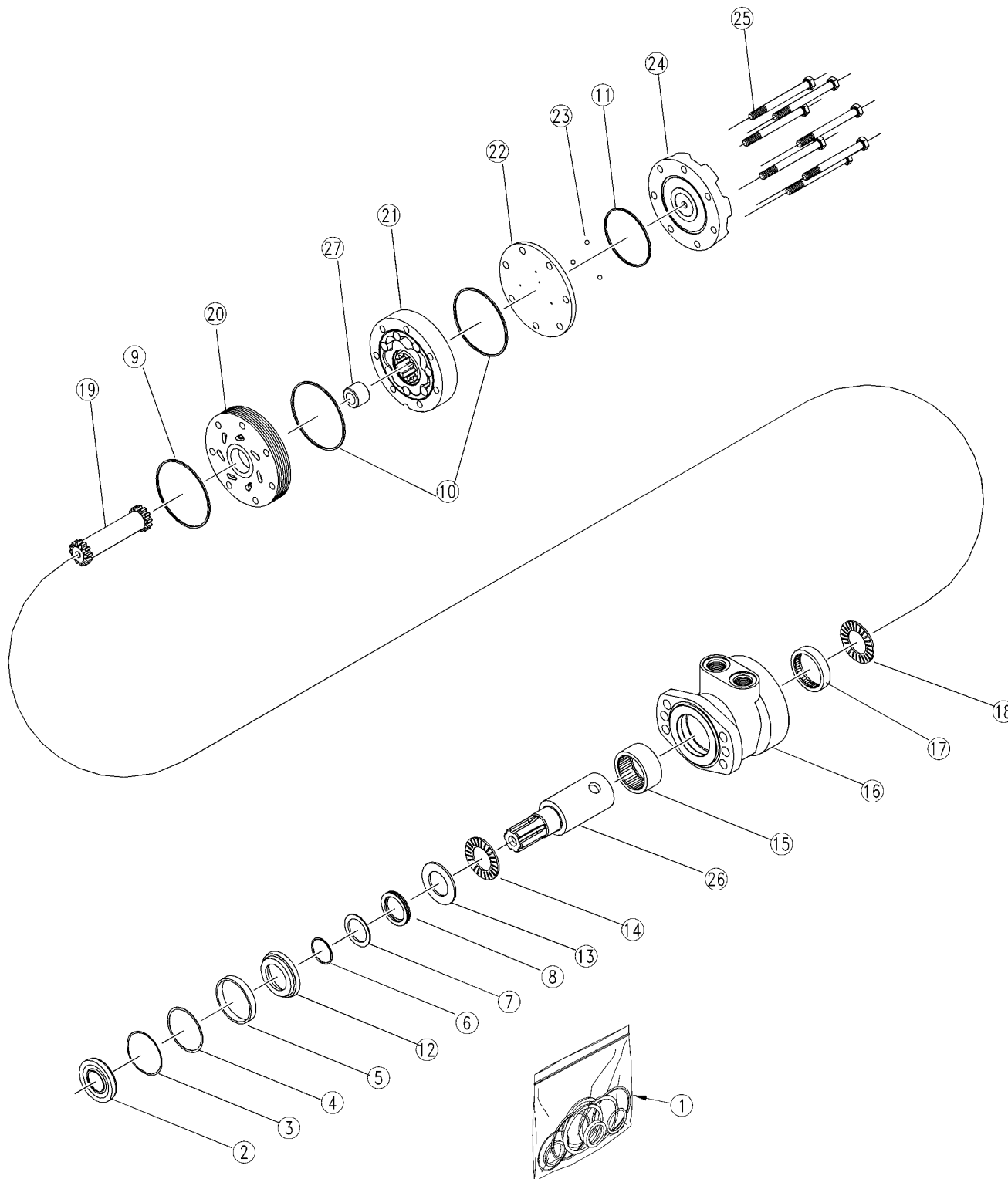
19242

Gearbox (826-313C) (826-314C)**Applies to AP-SA35**

Ref	Part No.	Part Description	Comments	Revision
	Dwg 19242	Drawing Image Number		
	826-313C	GBOX 3.75:1 14T PLNTRY 2 9/16	2 9/16" Dia. Round Shaft	
	826-314C	GBOX 3.75:1 14T PLNTRY 2 HEX *	2" Hex Shaft	
1.	040436	OMNI SHAFT - A2	(826-313C)	
1.	040429	OMNI SHAFT - H2	(826-314C)	
2.	060120	OMNI OIL SEAL (CR37053)		
3.	050209	OMNI BEARING CONE (JM714249A)		
4.	050208	OMNI BEARING CUP (JM714210)		
5.	140001	OMNI PIPE PLUG 1/8 SOCKET HD		
6.	010220	OMNI HOUSING H2 NO BRAKE HOLES		
7.	050206	OMNI BEARING CUP (32214)		
8.	050207	OMNI BEARING CONE (32214)		
9.	090259	OMNI SPACER FLAT TONGUED		
10.	130098	OMNI LOCK NUT WASHER, M70		
11.	120089	OMNI LOCK NUT M70X2		
12.	060119	OMNI O-RING		
13.	030447	OMNI GEAR RING 77T		
14.	180193	OMNI SECONDARY CARRIER SUB ASY		
15.	030568	OMNI GEAR SUN 28T		
16.	130120	OMNI RETAINING WASHER, SUN		
17.	020280	OMNI CAP INPUT		
18.	140062	OMNI PIPE PLUG, 3/8"-18NPT MAG		
19.	130058	OMNI LOCKWASHER, M8 SPLIT TYPE		
20.	110187	OMNI HEX BOLT, M8X1.25 GR10.9		
21.	130060	OMNI LOCK WASHER M10		
22.	110213	OMNI SOCKET HEAD BOLT M10X1.25		

Hydraulic Motor (810-531C) White

Applies to AP-SA35



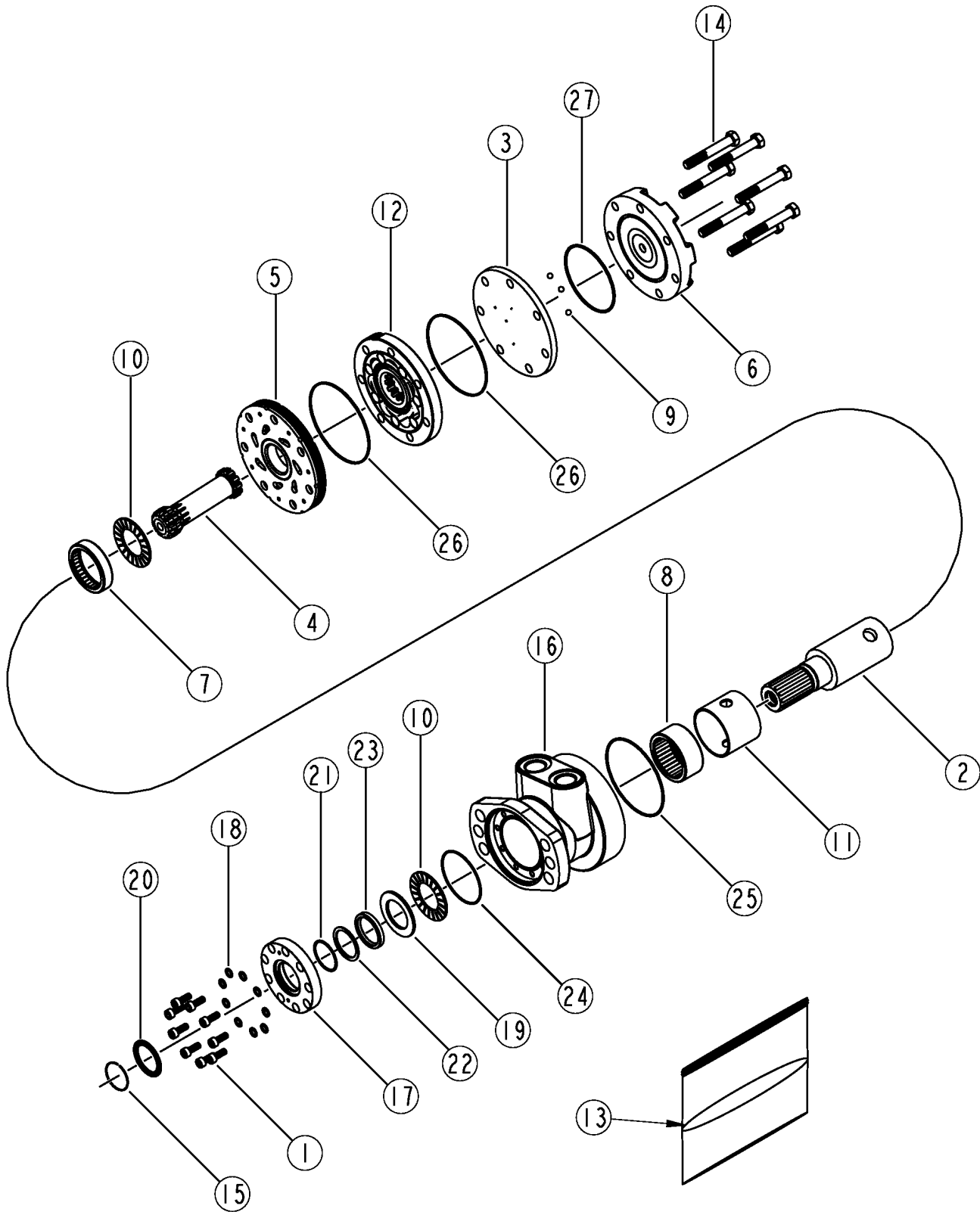
22409

Hydraulic Motor (810-531C) White**Applies to AP-SA35**

Ref	Part No.	Part Description	Comments	Revision
	Dwg 22409	Drawing Image Number		
1.	500444001	WH SEAL KIT	Includes items 2-13	
2.	N/A	DUST SEAL	Included with seal kit in item 1	
3.	N/A	RETAINING RING	Included with seal kit in item 1	
4.	N/A	METAL BACK UP SHIM	Included with seal kit in item 1	
5.	N/A	HOUSING SEAL	Included with seal kit in item 1	
6.	N/A	METAL BACK UP SHIM	Included with seal kit in item 1	
7.	N/A	BACK UP SEAL	Included with seal kit in item 1	
8.	N/A	HIGH PRESSURE SHAFT SEAL	Included with seal kit in item 1	
9.	N/A	REAR HOUSING SEAL	Included with seal kit in item 1	
10.	N/A	BODY SEALS (2)	Included with seal kit in item 1	
11.	N/A	ENDCOVER SEAL	Included with seal kit in item 1	
12.	N/A	SEAL CARRIER	Included with seal kit in item 1	
13.	N/A	THRUST WASHER	Included with seal kit in item 1	
14.	500018252	WH FRONT THRUST BEARING		
15.	500018003	WH FRONT HOUSING BEARING		
16.	500131823	WH "A31" HOUSING		
17.	500018002	WH REAR HOUSING BEARING		
18.	500018059	WH REAR THRUST BEARING		
19.	500014007	WH DRIVE LINK		
20.	500015006	WH FORWARD MANIFOLD		
21.	500247005	WH ROTOR SET		
22.	500012001	WH BALANCE PLATE		
23.	500018048	WH STEEL BALLS (3)		
24.	500016001	WH ENDCOVER		
25.	500445018	WH BOLTS (7)		
26.	500011600	WH SHAFT		
27.	N/A	WH SPACER	810-530C only	

Hydraulic Motor (850-252C) White

Applies to AP-SA35



39919

Hydraulic Motor (850-252C) White**Applies to AP-SA35**

Ref	Part No.	Part Description	Comments	Revision
	Dwg 39919 850-252C	Image No. HYD MTR 18 CU IN DSP W/14T SPL *		
1.	157018110	WH SEAL CARRIER BOLT (9)		
2.	500011101	WH SHAFT		
3.	500012001	WH BALANCE PLATE		
4.	500014007	WH DRIVE LINK		
5.	500015006	WH FORWARD MANIFOLD		
6.	500016001	WH ENDCOVER		
7.	500018002	WH REAR HOUSING BRG		
8.	500018003	WH FRONT HOUSING BRG		
9.	500018048	WH STEEL BALLS (3)		
10.	500018059	WH REAR THRUST BRG		
11.	500018305	WH BEARING SPACER		
12.	500247005	WH ROTOR SET		
13.	500444506	WHITE SEAL KIT		
14.	500445018	WH BOLTS (7)		
15.	500449201	WH WIRE RING		
16.	505013614	WHITE HOUSING		
17.	505017001	WH SEAL CARRIER		
18.	530018100	WH SEAL CARRIER BOLT WASHER(9)		
19.	530018102	WHITE THRUST WASHER		
20.	N/A	WH DUST SEAL	Available only in Seal Kit Item #13	
21.	N/A	BACKUP SHIM	Available only in Seal Kit Item #13	
22.	N/A	BACKUP SEAL	Available only in Seal Kit Item #13	
23.	N/A	SHAFT SEAL	Available only in Seal Kit Item #13	
24.	N/A	SEAL CARRIER SEAL	Available only in Seal Kit Item #13	
25.	N/A	HOUSING SEAL	Available only in Seal Kit Item #13	
26.	N/A	BODY SEAL	Available only in Seal Kit Item #13	
27.	N/A	ENDCOVER SEAL	Available only in Seal Kit Item #13	

Kubota Touch-up Paints

Applies to AP-SA35

No diagram associated with this Parts List

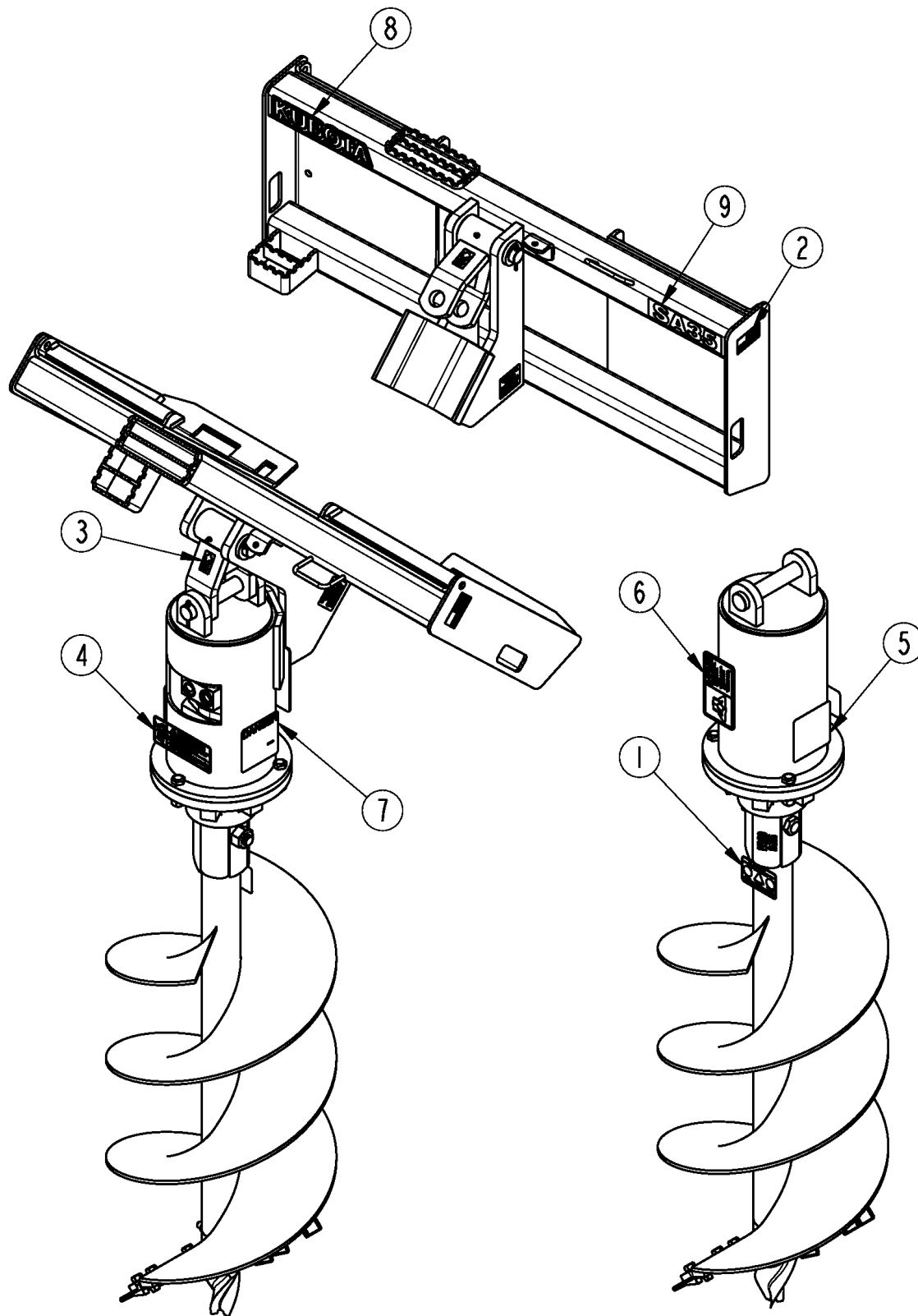
Kubota Touch-up Paints

Applies to AP-SA35

Ref	Part No.	Part Description	Comments	Revision
1.	821-070C	GLOSS BLACK SPRAY CAN	All Products	
2.	821-070CTU	GLOSS BLACK TOUCH-UP 5OZ		
3.	821-070CQT	GLOSS BLACK QUART		
4.	821-070CGL	GLOSS BLACK GALLON		

Label Placement

Applies to AP-SA35



37687

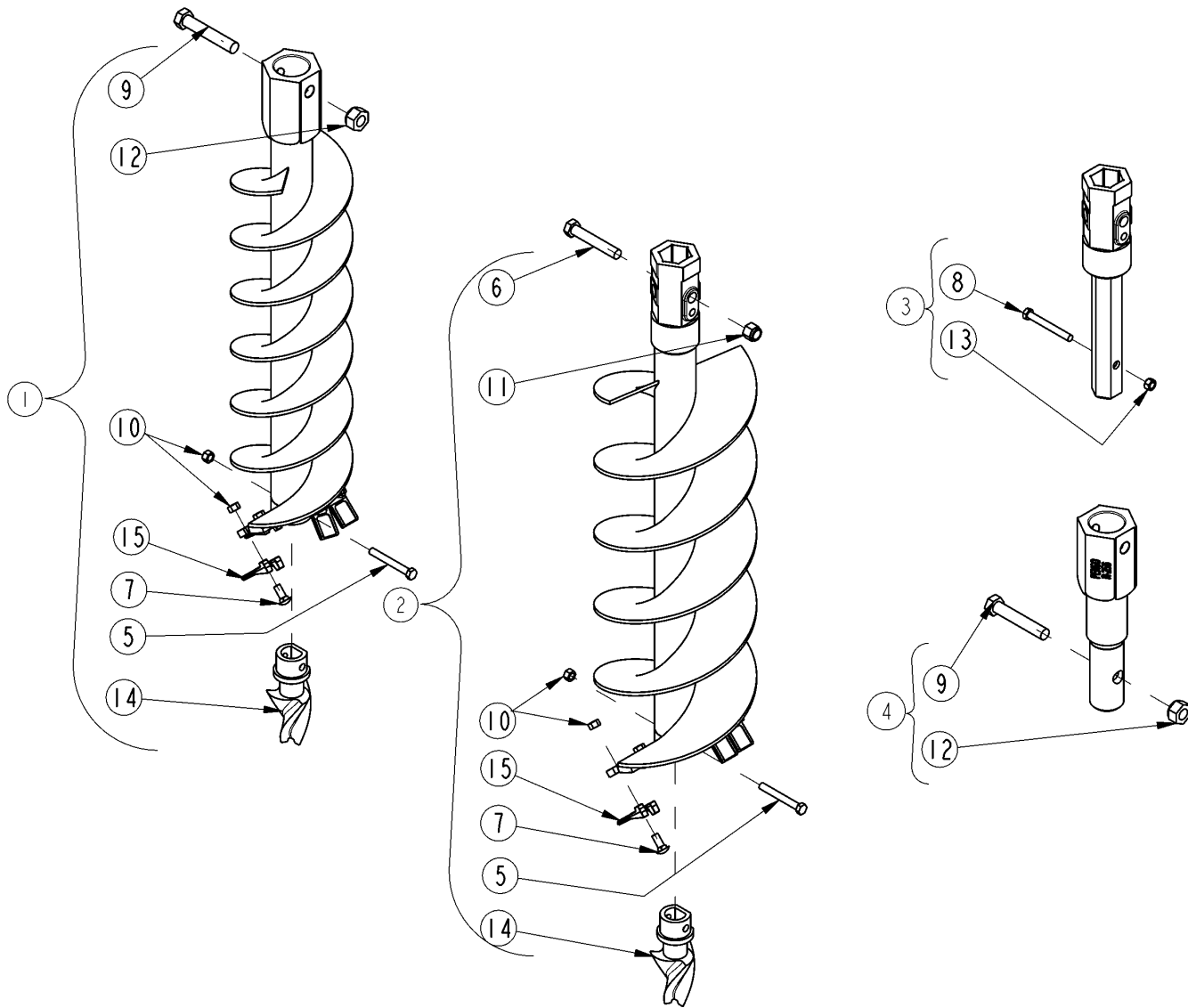
Label Placement

Applies to AP-SA35

Ref	Part No.	Part Description	Comments	Revision
	Dwg 37687	Drawing Image Number		
1.	135500	DECAL, DANGER AVOID INJURY		
2.	818-190C	DECAL FLAG		
3.	818-298C	DECAL GREASE EVERY 25 HOURS		
4.	838-094C	DECAL WARNING HYD PRESS LONG		
5.	838-292C	DECAL ELECTROCUTE HAZARD		
6.	838-293C	DECAL WARNING READ MANUAL		
7.	838-294C	DECAL DANGER ROTATING AUGER		
8.	858-398C	DECAL KUBOTA 10"		
9.	858-470C	DECAL SA35 WHITE		

Auger

Applies to AP-SA35



26724

Auger

Applies to AP-SA35

Ref	Part No.	Part Description	Comments	Revision
	Dwg 26724	Drawing Image Number		
1.	317-096A	SA 9X2 9/16 HUB DBL AUG. ASSY	uses 4 teeth	
1.	317-099A	SA 12X2 9/16 HUB DBL AUG. ASSY	uses 4 teeth	
1.	317-102A	SA 15X2 9/16 HUB DBL AUG. ASSY	uses 5 teeth	
1.	317-105A	SA 18X2 9/16 HUB DBL AUG. ASSY	uses 6 teeth	
1.	317-108A	SA 24X2 9/16 HUB DBL AUG. ASSY	uses 8 teeth	
1.	317-111A	SA 24X2 9/16 HUB TREE AUG ASSY	uses 9 teeth	
1.	317-114A	SA 30X2 9/16 HUB DBL AUG ASSY	uses 10 teeth	
1.	317-117A	SA 30X2 9/16 HUB TREE AUG ASSY	uses 11 teeth	
1.	317-120A	SA 36X2 9/16 HUB DBL AUG. ASSY	uses 12 teeth	
1.	317-123A	SA 36X2 9/16 HUB TREE AUG ASSY	uses 13 teeth	
2.	317-098A	SA 12X2 HEX HUB DBL AUGER ASSY	uses 4 teeth	
2.	317-095A	SA 9X2 HEX HUB DBL AUGER ASSY	uses 4 teeth	
2.	317-101A	SA 15X2 HEX HUB DBL AUGER ASSY	uses 5 teeth	
2.	317-104A	SA 18X2 HEX HUB DBL AUGER ASSY	uses 6 teeth	
2.	317-107A	SA 24X2 HEX HUB DBL AUGER ASSY	uses 8 teeth	
2.	317-110A	SA 24X2 HEX HUB TREE AUG ASSY	uses 9 teeth	
2.	317-113A	SA 30X2 HEX HUB DBL AUG ASSY	uses 10 teeth	
2.	317-116A	SA 30X2 HEX HUB TREE AUG ASSY	uses 11 teeth	
2.	317-119A	SA 36X2 HEX HUB DBL AUGER ASSY	uses 12 teeth	
2.	317-122A	SA 36X2 HEX HUB TREE AUG ASSY	uses 13 teeth	
3.	317-128A	SA 12X2 HEX AUGER EXTEN. ASSY		
3.	317-129A	SA 24X2 HEX AUGER EXTEN. ASSY		
3.	317-130A	SA 36X2 HEX AUGER EXTEN. ASSY		
3.	317-131A	SA 48X2 HEX AUGER EXTEN. ASSY		
4.	317-132A	SA 12X2 9/16 OD AUGER EXT. ASY		
4.	317-133A	SA 24X2 9/16 OD AUGER EXT. ASY		
4.	317-134A	SA 36X2 9/16 OD AUGER EXT. ASY		
4.	317-135A	SA 48X2 9/16 OD AUGER EXT. ASY		
5.	802-044C	HHCS 1/2-13X4 GR5		
6.	802-192C	HHCS 3/4-10X4 1/2 GR5		
7.	802-214C	RHSNB 1/2-13X1 1/4 GR5		
8.	802-311C	HHCS 1/2-13X4 1/4 GR5		
9.	802-546C	HHCS 7/8-9X5 GR5		
10.	803-019C	NUT LOCK 1/2-13 PLT		
11.	803-025C	NUT HEX 3/4-10 PLT NYLOCK		
12.	803-028C	NUT NY-LOK 7/8-9 PLT		
13.	803-147C	NUT HEX NYLOCK 1/2-13		
14.	820-232C	PENGO TRI-FLOW PILOT BIT		
15.	820-233C	PENGO AUGER TOOTH		



Part Number Index

The Part Number Index is a numeric index of all part numbers included in this manual. The index shows what page(s) the part is used on.

<u>Part Number</u>	<u>Page</u>	<u>Part Number</u>	<u>Page</u>
010220	11	500444001	13
020280	11	500444506	15
030447	11	500445018	13, 15
030568	11	500449201	15
040429	11	505013614	15
040436	11	505017001	15
050206	11	530018100	15
050207	11	530018102	15
050208	11	800-080C	9
050209	11	802-017C	9
060119	11	802-044C	21
060120	11	802-057C	7
090259	11	802-091C	7
110187	11	802-192C	21
110213	11	802-214C	21
120089	11	802-311C	21
130058	11	802-546C	21
130060	11	803-013C	9
130098	11	803-019C	21
130120	11	803-021C	7
135500	19	803-025C	21
140001	11	803-028C	21
140062	11	803-147C	21
157018110	15	804-011C	9
180193	11	804-015C	7
317-084H	9	804-022C	7
317-085H	9	805-058C	7, 9
317-086H	7	805-311C	9
317-095A	21	805-312C	7
317-096A	21	807-023C	9
317-098A	21	810-531C	7
317-099A	21	811-091C	7
317-101A	21	811-205C	7
317-102A	21	811-744C	7
317-104A	21	811-745C	7
317-105A	21	811-778C	7
317-107A	21	811-779C	7
317-108A	21	816-836C	7
317-110A	21	818-190C	19
317-111A	21	818-298C	19
317-113A	21	820-232C	21
317-114A	21	820-233C	21
317-116A	21	821-070C	17
317-117A	21	821-070CGL	17
317-119A	21	821-070CQT	17
317-120A	21	821-070CTU	17
317-122A	21	826-313C	7, 11
317-123A	21	826-314C	7, 11
317-128A	21	838-094C	19
317-129A	21	838-292C	19
317-130A	21	838-293C	19
317-131A	21	838-294C	19
317-132A	21	850-252C	7, 15
317-133A	21	858-398C	19
317-134A	21	858-470C	19
317-135A	21	Dwg 19240	9
500011101	15	Dwg 19241	7
500011600	13	Dwg 19242	11
500012001	13, 15	Dwg 22409	13
500014007	13, 15	Dwg 26724	21
500015006	13, 15	Dwg 37687	19
500016001	13, 15	Dwg 39919	15
500018002	13, 15	N/A	13, 15
500018003	13, 15		
500018048	13, 15		
500018059	13, 15		
500018252	13		
500018305	15		
500131823	13		
500247005	13, 15		

This Page Intentionally Left Blank



KUBOTA TRACTOR CORPORATION

3401 Del Amo Blvd., Torrance, CA 90503, U.S.A.
Telephone: (310)370-3370

Western Division: 1175 S. Guild Ave., Lodi, CA 95240
Telephone: (209)334-9910

Central Division: 4855 FAA Blvd., Fort Worth, TX 76155
Telephone: (817)571-0900

Northern Division: 6300 at One Kubota Way, Groveport, OH 43125
Telephone: (614)835-1100

Southeast Division: 1025 Northbrook Parkway, Suwanee, GA 30024
Telephone: (770)995-8855

www.kubota.com
